



Volume 17 Issue 2
FEBRUARY 2011

CREATED FOR
RACERS, RODDERS
AND RESTORERS

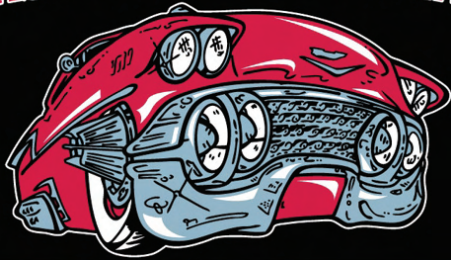
MOONEYES CHRISTMAS PARTY

'28 BLOWN TUDOR BY MOE, FISHTALES & MORE...



Save
RACE CITY

CLASSIC DREAM MACHINES



AUTOMOTIVE

CLASSIC DREAM MACHINES OFFERS FULL RESTORATION SERVICES ALONG WITH OUR NEW RM WATER BORN PAINT SYSTEM WE CAN OFFER OEM COLOR FOR YOUR CLASSIC, OR WE CAN MIX CUSTOM COLORS WITH OVER 3500 AVAILABLE COLORS. AIR BRUSHING AND CUSTOM ART WORK AVAILABLE AS WELL.

WE CAN ORDER PARTS FOR YOUR CLASSIC RESTORATION, DODGE, FORD, CHEV, CAR OR TRUCK. WE CAN GIVE YOU COMPLETE ONE STOP SHOP SERVICE FOR YOUR PROJECT.

New to Classic Dream Machines Full mechanical services with a fully licenced journeyman mechanic, engine / tranny swaps, general mechanical, 4 x 4 lift kits. New OEM and aftermarket parts installed, front end and brake repairs, for all classic cars and trucks, your one stop Classic Automotive Shop. Call Us Today!!

Chevelle
Nova
Camaro
Firebird
GTO
Dodge

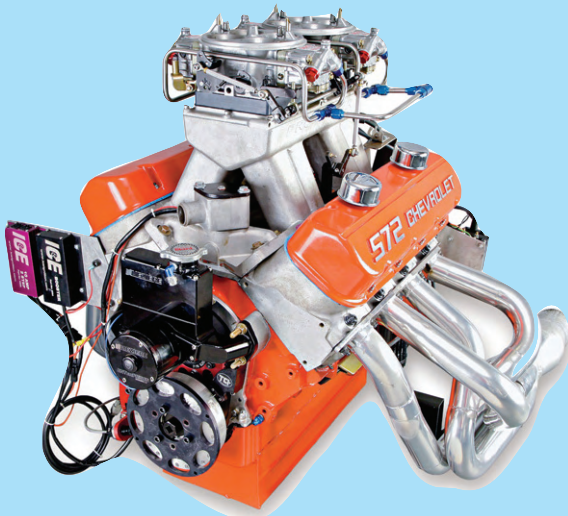
REPRODUCTION PARTS FOR
1955 TO 1972 CARS & TRUCKS
USED CARS & PARTS BOUGHT & SOLD

Belair
Impala
Olds
Buick
GMC
Ford

Fax (403) 341-4946

CHECK OUT OUR NEW LOCATION
Bay 1, 6721 67 Ave Red Deer Ab. T4P-1K3
www.classicbowtie.com
(403) 341-4949

"RENT a RAT"



Bluenose Racing Ltd. is offering to drag racers only an engine leasing program, save money on your engine program for the 2011 race season, we install, and dyno the engine for your needs. We can also provide transmissions on the same program. We can provide slicks of any brand you want at a very good price to keep your budget in line, call for more info or any questions.

454-500 cu in \$500.00 per month,
501-550 cu in \$600.00 per month,
550-600 cu in \$685.00 per month,
601-632 cu in starting at \$750.00 per month.

Small blocks are also available.

All rentals, rent to own and leasing or financing require down payments/deposit, we can finance all or part of whatever you require.

Phone 1-877-962-6665

IN HOUSE CHASSIS DYNO, Dyno Jet with Eddy Brake



Bluenose Racing Ltd.

Race Cars - Custom Vehicles - Automotive Repair
Chassis Fabrication

780.962.6665

Toll Free: 1-877-962-6665

45-B South Avenue, Spruce Grove, AB

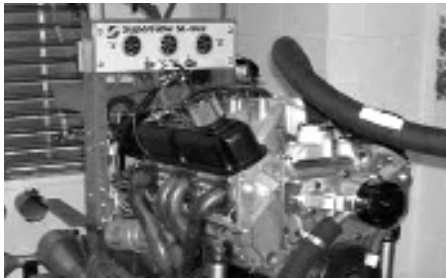
info@bluenosering.com

WANT TO GO FASTER? ENGINE NEED FRESHENING? NOW IS THE TIME!

DYNO SPECIAL AVAILABLE WITH FRESHENING CALL FOR DETAILS....



2500 HP DYNO BOOK YOUR SPOT NOW!



Whether You Need An Engine To Complete Your Project Or Your Just Looking For More Power, Pro Stock Has The Right Engine For Your Ride!!

- | | | | |
|---------------------------------------|----------------------------|----------------------------|--------------------------|
| *Balancing & Blue Printing | *Align Honing | *Block Boring & Torque | *Propane & Stock Engines |
| *Rod Resizing | *Custom Cylinder Head Work | Plate Honing | Available |
| *Custom Engine Machining & Rebuilding | *Custom Head Porting | *Cylinder Head Resurfacing | *Engine R & R Available |
| | *Block Truing | | |

**Differential Parts?
GUARANTEED LOWEST PRICES**

**Yukon Gear and
Randys Ring & Pinion**

- POSI'S
- AXLES
- SPOOLS
- COUPLERS
- GEAR SETS
- INSTALL KITS
- PINION YOKES
- AXLE UPGRADES
- DETROIT LOCKERS

We are dealers for
Bullet Racing Cams,
Ultradyn and
JESEL

DRIVETRAIN WOES?

**NEED DIFFERENTIAL WORK?
MAYBE A GEAR CHANGE?
DISC BRAKE CONVERSION?
CALL US TODAY!!
LET US HELP YOU
GO FASTER!!!**



**PERFORMANCE
& MACHINE LIMITED**

**780-453-6161
1-87-PROSTOCK**

12403-126 Ave., Edmonton

YOUR #1 ENGINE & PERFORMANCE SPECIALIST !!

PROSTOCK has been serving the people of Edmonton & Area since 1987 and in this time have built an excellent reputation in service & technical support, as well as competitive pricing. PROSTOCK is more than just a parts store and machine shop. Let our years of Dyno and Street and Strip testing work for you!

www.winnerschoiceracing.com



Truck Accessories

POWERMASTER



#S1000-\$359.95 EACH
XS POWER 16V LIGHTWEIGHT
33LBSAGM TECHNOLOGY
LONG LIFE SUPERIOR CRANK-
ING, VIBRATION RESISTANT

PERFECT LAUNCH PRACTICE TREE



\$99

RCI BELTS



FROM **\$129.99**

DOOR CADDY

\$354.99



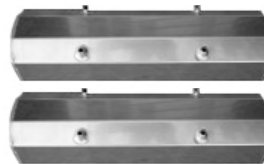
PHSP30CSA



AUTOMETER 3911
\$327.99



TOOLS AND SHOP EQUIPMENT



ALUMINUM VALVE COVERS
FROM
\$149.99



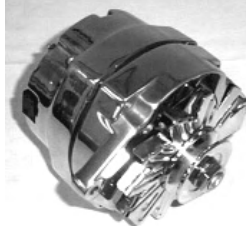
CAR CARE



AEROMOTIVE
A1000 FUEL PUMP
\$474.99



VALUE PACKS



ON SALE



CALL FOR DETAILS



WINNERS CHOICE RACING PRODUCTS
1-877-782-8010 TOLL FREE



CALL US FOR YOUR HARD CORE RACING COMPONENTS. CALL BETWEEN 8AM-9:30PM



The beginning of any new year is a time for some to broaden their horizon by developing new life long learning skills. Your local community is there to help you improve your general knowledge on a variety of topics, with many courses offered after hours and on weekends. Below are a dozen examples of winter classes for both sexes, pick one or more so you will be in shape for the upcoming summer.

Winter Classes at

THE ADULT LEARNING CENTER, REGISTRATION MUST BE COMPLETED BY FEBRUARY 14, 2011

NOTE: DUE TO THE COMPLEXITY AND DIFFICULTY LEVEL OF THEIR CONTENTS, CLASS SIZES WILL BE LIMITED TO 8 PARTICIPANTS MAXIMUM. UPON CLASS COMPLETION, DIPLOMAS WILL BE ISSUED TO SURVIVORS ONLY.

For Women

- Class # 1**-Up in Winter - Down in Summer: How to Properly Adjust a Thermostat. Degreee by Degreee, with Slide Presentation, including programmable, digital & older mercury models. Meets 2 days only, Monday & Wednesday every 4 hours starting at 7:00AM till 7:00PM
- Class # 2**-Which Takes More Energy: Putting the Toilet Seat Down, or Bitching About It for 3 Hours? Round Table Discussion with a Pot Luck Theme. Meets 2 weeks, Saturday 12:00 for 2 hours.
- Class # 3**-Is It Possible To Drive Past a Shopping Mall Without Stopping? Group Debate, includes tips on how to find the best non-handicap parking spot. Meets 4 weeks, Saturday 10:00 PM for 2 hours.
- Class #4**-Fundamental Differences Between a Purse and a Suitcase: Pictures and Explanatory Graphics. Meets Saturdays at 2:00 PM for 3 weeks.
- Class # 5**-Curling Irons: How can they end up back into the Bathroom Cabinet? Frame by Frame Video Examples. Meets 4 weeks, Tuesday and Thursday for 2 hours beginning at 7:00 PM
- Class # 6**-How to Properly Ask Questions During Commercials and Be Quiet During the Game: Help Line and Support Groups from NHL, NBA, NFL, CFL Meets 4 Weeks, Sunday Mornings 10:00AM
- Class # 7**-Can a Bath Be Taken Without 14 Different Kinds of Soaps, Shampoos & Candles? Open Forum with White Wine, Cheese & Crackers. Taxi ride home included. Monday at 7:00 PM, 6 hours.
- Class #8**- Health Watch: They Make Medicine for PMS Bring all your prescriptions, pharmacist on hand to explain drug interactions & side affects. Three nights; Mon, Wed, Fri at 7:00 PM for 2 hours.



VOLUME 17 ISSUE 2, FEBRUARY 2011

EDITOR Don Macgowan
PRODUCTION Linda Collinge
MARKETING Don Macgowan, don@quick-times.com
 Catfish, catfish@quick-times.com

CONTRIBUTORS Doug Adams, Catfish, Moe Putney, Fred Nelson, Ken Sitko, Sheryl Ogonoski, Gerard Graphics, Bill Robertson, Todd Young, Turbo Girl, Vern Scholz
COVER Doug Adams photo

www.quick-times.com

(403)886-7663 OR FAX (403)886-8600
ads@quick-times.com

Publication Mail Agreement 40036721
 Return Undeliverable Canadian Address To

QUICKTIMES,
RR1, PENHOLD, ALBERTA T0M 1R0
 NO PART OF THIS PUBLICATION CAN BE RE PRODUCED WITHOUT WRITTEN PERMISSION FROM THE PUBLISHER

For Men

- All Meetings Wed Nites, 8:00PM- till close, Wings included.
- Class #1**-HOW TO PROPERLY FILL ICE CUBE TRAYS. (Step by step guide with slide presentation, including removal without damage, on older metal models)
- Class #2**-TOILET PAPER ROLLS! HOW DO THEY END UP ON THE HOLDERS? (Roundtable discussion among a panel of E.R. Physicians)
- Class #3**- DIFFERENCES BETWEEN LAUNDRY BASKET & FLOOR. (Shooting Practise with Hampers, Pictures and charts & tape measure included for home work)
- Class #4**- REMOTE CONTROL! (Losing the remote control - GPS installation, activation, with Nationwide Toll-free Trauma, Search & Rescue Help line)
- Class #5**- EMPTY MILK CARTONS: DO THEY BELONG IN THE FRIDGE OR THE RECYCLE BIN? (Group dialogue and role play, cookies included) Note: Lactose intolerant people need not apply!
- Class #6**- HEALTH WATCH: BRINGING HER FLOWERS IS NOT HARMFUL TO YOUR HEALTH. (PowerPoint presentation detailing ordering techniques, card writing & method of delivery)
- Class #7**- REAL MEN ASK FOR DIRECTIONS WHEN LOST.(Real life testimonial from the one man who did) NOTE: This class only requires a minimum of two, as there is no qualified instructor.
- Class #8**- IS IT GENETICALLY IMPOSSIBLE TO SIT QUIETLY AS SHE PARALLEL PARKS? (Driving simulation without a vehicle, profanity and alcohol)

Caddy Purr's like a Kitty Cat

by Fred Nelson

It's hard to contain myself when I have a good story trying to "claw" its way to the surface, and I don't yet have permission to do it. Confidentiality is very important to some people, whereas my life is an open book - OK, a comic book - but every so often, I get a chance to do a world-class story.

Three years ago, a local collector, who shall remain anonymous, was bringing this 1933 Cadillac Fleetwood to Calgary. He had spotted it at the Pebble Beach Invitational, which is pretty much THE top car show in North America. The big sedan had only 7000 original miles, and was one of three known to exist (the other two had been restored). This one was still as new throughout.

I met with the owner's Executive Assistant, who made the car available for the appraisal. It had just arrived from California. I was getting a big kick out of the way things were built in 1933.

The engine was a flathead V8, but it looked nothing like Ford's V8, which had been released the year before. Among other things, it had power brakes and the machinery required for same was incredible.

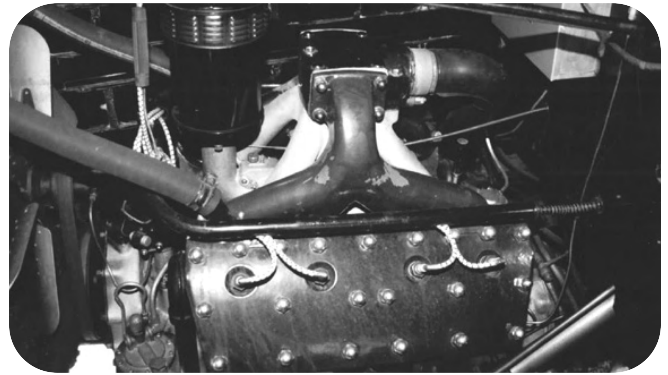
A general rule of appraisals is that, if the appraiser has to ask you "what's this" and "what's that," send him away. He doesn't know what he's doing.

A huge foot-square box on the firewall had Mallory's name on it, and rather than ignition, turned out to be a part of the radio. Other than the hoses being replaced and new tires, everything was original and absolutely mint. When the car was being shipped to Calgary, somehow, someone had gotten a greasy handprint on the light-colored upholstery. This had already caused a great deal of anguish for the new owner and his assistant.

There's a good reason we use the people we recommend. Clint, at A-Basic Towing ("If you love your car, you'll love us") loaded the car on his new deck truck, using kid gloves. He hauled it out to Dave Clayton at Personal Touch Car Care in Prairie Royal Estates.

You only get one chance at cleaning grease off original 1933 light-colored upholstery. If you screw it up, you're dead meat. Dave handled it without incident, and then detailed the rest of the car inside and out.

I was glad to help out, and as I became better friends with the assistant, more details came out about the car. The grandson of a building magnate had ordered this car built for his wife in 1933. She loved it.



There was even a jump-seat to take along a maid-servant. Unfortunately, he passed away shortly afterwards, and his wife vowed never to ride in it again. With barely 1900 miles, she put it away in darkened, dry California storage.

When she passed away in 1957, she left her entire estate, including the car, to her nine cats.

As long as they were well-fed, Muffy, Fluffy, Flossy et al had no interest in sinking their teeth into the situation. Such was not the case with the lawyers, however, who developed a feeding frenzy. The red tape lasted for years.

The cats, having equality with dogs, were already reduced to one-seventh the years allotted to us. Besides inspiring Disney movies in different variations, this legendary story also became the inspiration for the crazy cat-lady character on "The Simpsons."

Three years ago, things were booming; now there's a recession. It's possible the car may be available for sale. For less than seven figures, what do you get for the guy (or gal) who has everything? This is one of one! With something as world-famous as this, I'd like to see it stay in Canada. Although the car resides in a location with slightly more security than the Pentagon, I'm friends with the assistant. Maybe I can get you an appointment.

Fred Nelson is an accredited local appraiser who owns and operates Nelson Racing. Reach him at 403-242-3856.





PERFORMANCE POWERTRAIN PRODUCTS LTD.

Expertly prepared drivetrain components for your application
 Stephen LeBel 780 987-8023, c-780 919-3294, PPPStephen@gmail.com,
 Jesse LeBel 403 345-2524, fx-403 345-2526, c- 403 315 1640, PPPJesse@gmail.com,

STREET/STRIP OVER DRIVES RATED TO 600HP!

600HP & 600FT/LBS GM 700R4 STREET/STRIP. - \$2850.00

600HP 550FT/LBS FORD AOD STREET/STRIP. - \$2750.00

*prices are exchange or \$200.00 core charge applies.

	Stock Plus	Street Plus	Street/Strip	Race
Turbo 350	\$695, \$795 w/conv.	\$750, \$1045 w/2400stall	\$995, \$1425 w/drag Pac	\$1675, \$2000w/brake
Turbo 400	\$795, \$895 w/conv.	\$850, \$1145 w/2400stall	\$1095, \$1425 w/drag Pac	\$1675, \$2100w/brake
PowerGlide 700R4	\$795, \$895 w/conv.	\$895, \$1145 w/2400stall	\$1095, \$1425 w/drag Pac	\$1675, \$2000w/brake
4L60E		\$1550 w/conv.	\$2850, \$3175 w/TSI stall	
4L80E	\$2900, \$3300 w/conv.	\$1795 w/conv.		
TF 727/904	\$795, \$895 w/conv.	\$3050, \$3700 w/2400	\$3200 (full manual, no computer required)	
A518-OD	\$795, \$895 w/conv.	\$850, \$1145 w/2400stall	\$1095, \$1425 w/drag Pac	\$1675, \$2500w/brake
Ford C6	\$1995, \$2150 w/conv.	\$2050, \$2400 w/2400 stall		
Ford C4	\$795, \$895 w/conv.	\$850, \$1145 w/2400stall	\$1095, \$1425 w/drag Pac	\$1675, \$2400w/brake
FORD AOD	\$895, \$995 w/conv.	\$950, \$1245 w/2400stall	\$1195, \$1525 w/drag Pac	\$1775, \$2500w/brake
		\$1700 w/conv.	\$2750, \$3095 w/TSI stall	

TSI STREET and RACE CONVERTERS

	Street 12" 2000-2800	Street 11" 500hp 2400-2800	Street 10" 600hp 2500-4500	Str/Strp 10" 850hp w/Blpts 2500-4500	Race 10" Spragless 1150-1400hp	Race 9" 900hp less than 3%slip	Race8" 400-800hp 3500-7000	Super 8" 800-1150hp 4000-7000
POWERGLIDE	295.00		450.00	525.00	1475.00	925.00		
Spragless W/Steel Stator							1025.00	1200.00 1450.00
TH350/400	295.00		450.00	525.00	1475.00	925.00		
Spragless W/steel Stator					1450.00		1025.00 1125.00	1200.00 1300.00
200R4	375.00		780.00					
700R4	375.00		780.00					
4L60E	425.00							
4L80E	699.00							
TF 727	395.00	525.00	750.00		925.00			
Spragless Steel Stator							1150.00	1300.00 1350.00
CHRYSLER904	450.00		825.00					
FORD C4	395.00	525.00	725.00		925.00			
Spragless W/Steel Stator							1095.00	1350.00 1450.00
FORD C6	395.00	525.00	725.00		925.00			
Spragless W/Steel Stator							1095.00	1350.00 1450.00
FORD AOD	395.00	595.00	675.00					

ALUMINUM CYLINDER HEADS Custom built on bare ProComp Castings

- **SB Chev**, 190cc intake ports/64cc Comb. Chambers, 2.055" intake valves/1.6" exhaust valves, .550" springs, Chrome Moly retainers, 10* locks, 3/8 moly studs and guide plates. Manganese Bronze intake guide, Phosphor bronze exhaust Guide. **\$615.00** Bare, **\$850.00** as cast ports complete, **\$1475.00** CNC Intake/exhaust/ Comb. Chamber, 210cc/67cc (excellent flow)
- **BB Chev**, 320cc rectangular or 310cc oval, Intake ports, 115cc Comb. Chambers, 2.25" intake valves 1.88" exhaust valves, .550 springs, Moly retainers, 10* locks, 7/16 studs, guide plates. Manganese Bronze intake guide, Phosphor bronze exhaust Guide. **\$975.00** Bare, **\$1395.00** as cast rectangle port complete, **\$1395.00** as cast oval port complete. A
- **SB Ford**, 210cc intake ports/60cc Comb. Chambers, 2.055" intake valves/1.6" exhaust valves, .550" springs, Chrome Moly retainers, 10* locks, 3/8 moly studs and guide plates. Manganese Bronze intake guide, Phosphor bronze exhaust Guide. **\$675.00** Bare, **\$850.00** as cast ports, **\$1525.00** CNC intake/exhaust/comb chamber, 220cc/70cc (excellent flow)
- **ALL HEADS AVAILABLE WITH SOLID, HYDRAULIC OR ROLLER SPRINGS**

GST not included. Prices subject to change. Dealer/Jobber inquiries invited.

*** PPP CUSTOM REBUILDS ALL 4x4 TRANSFER CASES! ***



Happy New Year everyone!

I hope Santa brought you everything that you asked for this past Christmas. I think my new camera fell off the sleigh as Rudolph negotiated a steep banked turn somewhere over San Francisco. Maybe the elves will find it in time for my birthday....who knows?

Since things slow down a bit around the holidays, I figured it would be a good time to get an idea of some of the places I'd like to go in 2011. I think I'm going to mix it up just a little this year and try to make it to places I haven't been before. However, there are still a few events that will remain a staple on the calendar. This year will start out with a trip to Pomona and the Grand National Roadster Show. I would consider this show to be a must see every year, and I look forward to returning to the Pomona Fairplex in a few weeks. For now, February is a blank.

I have no assignments, and I'm going to be out of town during the Winter Nationals so we'll see what comes up. March starts to get things going with the March Meet at Bakersfield. By then, it will be spring and I'll have my sights set on the West Coast Kustom Nationals in Santa Maria happening the last weekend in May.

Sprinkle in Dragfest, and possibly Viva Las Vegas, and the first half of the year is off and running straight into summer.

The biggest event on my schedule is going to be the Holley Hot Rod Reunion in Bowling Green Kentucky this June. My friend from Alabama has been trying to get me out there for years. I think I just might do it this year. He's currently trying to line up some photo shoots for me so I can make a few bucks to pay for the trip while I'm there.

As for the rest of the year, it's too soon to tell. Bonneville was supposed to be on the calendar for last year, but didn't happen. I didn't make one trip to El Mirage. I don't know if Ink-N-Iron will make the cut this year because of the Kentucky trip. But by that time, there will be a lot of other things going on. I'll leave the second half of the year out of the equation for now and get back to finishing up some business from last year. Namely, the Mooneyes Christmas Party.

I know it's been barely six months since the Mooneyes 2009 Make Up Dry Event Show and Shine (yes, that's really what they called it) that was held in July under scorching 100-plus degree summer skies. The Dry Event was the make-up date for the 2009 Mooneyes Christmas party that was for all intents and purposes rained-out.

The philosophy behind the Mooneyes Christmas Party is simple. Give the people whether it be the participants, spectators, or vendors a good deal, a great time, and the house will be packed...and it was.

The sun shined bright for the first time in three years over the Mooneyes (December) event and Mother Nature provided a chamber of commerce day in Southern California. Clear skies and temperatures just north of 80 degrees--a perfect December day. I know that most of the people that will read this are buried up to their eyes in snow and the last thing you want to hear is someone telling you of their adventures on an 80-degree December day. What can I say? Let's make believe I didn't have a good time...that's almost true.

At the July event, I passed on the drag racing portion of the program and just concentrated on photographing the cars in the show area. But for this event,

I was ready to shoot the works. The races, the car show, bands, etc. Early in the day, I went over to the credential booth and checked in and got my wristband so I would be ready when the dragstrip opened. As I was walking through the staging lanes, one of the photographers, that I have known forever, says "I hope they let you out there in shorts, last year they tried to toss me out for having shorts on.

This is guy takes every opportunity that he gets to give me a hard time. I think the guy is full of crap most of the time anyway but, I always try to remain cordial, which really fries his ass! But, as fate would have it my archrival was right! When it came time for the cars to run I walked out on the starting line and took my spot along the wall. Before the first car fires up a track official gives me the boot, "sorry sir you can't be out here in shorts"! Are you kidding me!!!

Oh well, It was around lunchtime anyway. So it's off to the car for a little snack.

After a brief rest and a few ribs that were left over from Friday night's dinner at Gus's in South Pasadena, I was back on the trail. As typical with the Mooneyes events that I have attended, the crowd starts to thin out around 3pm. Cars start to move around and some new cars drive in. It's a good time to get photos of the cars with some space around them.

I stuck with it until 3:30 or so then it was time to get up the highway. I had to be at a birthday party at 7:30 so there was just enough time to drive home, get cleaned up, and get over to the party. As you might have figured out, I didn't mention anything about a pin-up contest. That's because once again, I missed it. For one reason or another, they were delayed getting the girls on the stage and I had to go.

If it's any consolation, my friend that stayed told me I didn't miss anything, no offense to the contestants.

I thought by now that I had this deal figured out. We know the places to stay, the places to eat, and the route to take into the event. Now add to the list, wear long sleeve pants next year. I think I might try to find a pair of those hiking pants that have the legs that Velcro on and off... I hate long pants! The Grand National Roadster Show is coming next month. Enjoy the photos,

Doug







This show was Hot!



MOONEYES CHRISTMAS PARTY



MOONEYES USA PRESENTS
X-MAS PARTY SHOW & DRAG 2010
HOT RODS, CUSTOMS, CHOPPERS & MORE 1/8 MILE DRAGS PRE 1969 ONLY
ART AUCTION & LIVE PINSTRIPING DEMO PIN-UP GIRL CONTEST LIVE BANDS
SATURDAY DECEMBER 11, 2010
TOYOTA SPEEDWAY AT IRVINDALE - 500 SPEEDWAY DRIVE, IRVINDALE, CALIF. 91706
Contact MOONEYES tel: (562) 944-4311; email: sales@mooneyes.com; web: http://www.mooneyesusa.com



Gassers are always cool



PRO MAX PERFORMANCE Thinking of cross border shopping? The Dollar is strong so you want to take advantage and get that part you have had your eye on? Well we can help. Call ProMax on Brand Name Products at prices that will surprise you!

Moog® Steering and Suspension Parts

MOOG CHASSIS PARTS™

PROMAX NOW SELLS MOOG CHASSIS PARTS AT INCREDIBLE LOW PRICES - SAVINGS OF 29% TO 48%! WE HAVE A FANTASTIC DEAL FOR YOUR MUSCLE CAR, INCLUDING COMPLETE REBUILD PACKAGES. INSTALLATION AVAILABLE! SO IF YOU WANT TO FIX THAT SLOPPY FRONT END YOU CAN SAVE BIG BUCKS NOW. MOOG IS THE TRUSTED NAME IN CHASSIS. WHY BUY "MYSTERY PARTS"? MAKE SURE IT SAYS MOOG ON THE BOX!

MONROE SHOCKS & STRUTS

How do you buy this product at such low prices? - call us to find out. You won't believe how little you pay. Monroe products now available at ProMax!

MONROE SENSLATRAC SHOCKS & STRUTS
MONROE FlexFlex
QUICK-STRUT™
MONROE MONRO-MATIC PLUS™
MONROE GAS-MAGNUM
MONROE MAX-AIR™



Dart SB Chevy Blocks On Sale! Now \$1400 !



Levite Bearings at Wholesale or less!

EZEFI
EZ EFI from \$1790.00



GREAT PRICES GREAT SERVICE - THE GUYS AT PROMAX HAVE 32+ YEARS INDUSTRY EXPERIENCE - WE KNOW PERFORMANCE!
 PHONE (780) 465-0770 OR STOP BY 9616 - 51ST AVE EDMONTON, AB
 E-MAIL - mail@promaxperformance.com



Shafiroff Ultra Street 582 pump gas, fully CNC Ported, 355cc Dart Pro 1 aluminum heads, requires a minimum Of 93 octane gas, small price to pay for the incredible performance this package delivers. Horsepower 825 @ 6300 RPM Torque ft/lbs 745 @ 4800 RPM compression ratio 10.75 to 1 fuel requirement 93 Octane Dart Pro 1 Fully CNC Ported 355cc aluminum heads Manley 1.640" NexTek roller springs & titanium retainers w/10° locks, Pro Series 1.7 aluminum roller rockers ARP Competition Head Stud Kit Comp Cams Custom Ground Steel Billet Solid roller cam designed with more aggressive ramp speed, lift and duration. Stage I Merlin X Dominator intake designed for extreme performance JE/SRP forged aluminum pistons w/coated skirts \$13,000. complete carb to pan. Call Kevin 780-887-0518 F1

468 BBC LS7 engine, 12.5-1 forged pistons, 7/16 rods, steel crank, 990 square port heads, roller cam and lifters, Edelbrock intake/covers, 950 Holley carb, good for 650 -700 HP. \$5250.00 Don 403-872-0250 F

454 Cu. In. short block stroked to 482 Cu. In. Eagle crank rods, JE pistons, Milidon drag race pan, high volume pump, 100 passes since freshened. Never hurt, also comes with 748 lift roller comp cam, two sets of comp roller lifters. Can supply dyno results call 306-745-3704



Impact COATINGS INC.
POWDER • CERAMIC • SANDBLASTING

780-455-COAT (2628) 15915 - 121A Avenue
 TOLL FREE 888-376-COAT Edmonton, Alberta
 780-455-6766 (FAX) T5V-1B1

SBC highly polished B&M 6-71 blower motor complete. Built by Miller engines, over \$10,000 invested, new everything, 355 ,4 bolt main, steel crank blower pistons, the best parts, est .500- 550 HP built for reliability and a daily driver, willing to trade for street rod, project car. etc. or cash money, \$7500.00. call Doug 204-654-9829 or 661-5222. F1

SELL IT HERE!!

NOW STOCKING OPEN TRAILERS



BY VINTAGE TRAILERS



Financing and Leasing OPTIONS AVAILABLE



Popular OUTLAW Options
 • Spring Cover • Roof Vents

CALL WITH YOUR TRAILER NEEDS

Vintage enclosed Car Haulers Call us for your trailer needs Tag's, Fifth Wheels and Slide out Living Quarter Trailers

Stormy's Trailer Sales Ltd
 New Norway, Alberta
(780)855-3778
www.stormystreetrods.com

MARCH 18, 19 & 20

THE KERN COUNTY RACING ASSOCIATION PRESENTS

2011 BAKERSFIELD MARCH MEET



Fuelers • Funny Cars • Gassers
 Car Show • Vendors • Swap Meet • Camping

AUTO CLUB FAMOSO
 Raceway, Bakersfield, Ca

www.autoclubfamosoraceway.com
 Raceway 661-399-2210 • Info Line 661-399-5351

ENGINES

GM performance 502 crate motor, 10-71 Blower shop blower, Edelbrock heads, twin Holley 750 CFM carbs, Hooker headers, custom pistons and custom camshaft, all receipts and dyno sheets, 750 HP and 720 lb-ft @ 8psi boost, more info contact: 519-580-5297 Ontario F1

New 540 cid, BBC Chevy engine for sale. Assembled with all new high quality race parts, from Dart, eagle, SRP, Comp Cams, and numerous other suppliers. There is over \$12,000.00 USD, invested, We are open to offers. Engine is complete from Carb to pan and pulleys to flywheel. Call 306-980-8223. J1

Blown SBC,355ci,steel crank, forged/coated blower pistons,balanced,4 bolt mains, head and main studs, Lunati blower cam, roller rockers, double bump heads with 2.02/1.60 valves, 6-71 blower,3" belt drive,2-625cfm Edelbrock carbs, Enderle throttle linkage, MSD billet distributor and 6BTM ignition box, aluminium water pump, Very streetable but built strong to take some boost, NEW build never put into anything \$7500 obo 403-741-4261 tmacracin@hotmail.com J1

BBC 540 Bowtie TD block, Manley Rods, SRP pistons, assembled. Callies 4.25 crank, \$2800. BBC 582 low deck, Dart big M block, Eagle 4340 crank & rods. Mahle 13.6-1 comp. hamburger oil pan, Jesel belt drive, Bullet solid roller cam, RHS 360 CNC aluminum heads, comp roller rockers, crane girdle, polished aluminum valve covers, Victor intake, fresh, not run yet, \$8500. Fab 9" rear end housing, 35 Spline axles with 4 link bars,42 3/4 axle flange. Axles new in 2010 with 5/8 studs and nuts, \$500. Powerglide 1.76 turbo input. Pro tree brake, aluminum pan. Works good, \$1000. Hughes 8" convertor 5600-5800 stall on brake, \$500. Call Mark 250-762-3711(days) 250-768-7316(eves). J1

Eagle 350 - 377 base - 381 C. 4340 steel crank 400 CI billet bore 4.155 scat 4340 I beam /shed connecting rods Mehling high pressure oil pump, ARP main studs, world product Motown 220 heads Holley strip dominator with SRP 4.155 with seal pro rings. comes with 8qrt race pan, power steering pump, belts, pulleys, water pump, fuel pump. \$3800.00, Also for sale Alcohol carb \$800.00 Call 306-421-7012 J1

400cu.in Bowtie block. Nascar Heads 42cc 15 degree Jim Bell titanium valves Jessel shaft rockers, Jessel lifters, Jessel belt drive, JE pistons 4.125 15-1 comp. Manley 6" super 70 aluminum rods. Cola crank-



780-455-3171 1-800-561-2886
12628 124 St. Edmonton, Alberta
www.ampauto.com
info@ampauto.com

<p>New Replacement Panels Trucks, Cars, Exotics & Imports <i>Hoods, Lights, Grills,</i> <i>Fenders, Doors, Door</i> <i>Handles, Box Sides, Tailgates,</i> <i>Rust Repair Panels, Carpet</i></p>	<p>Alsa Exotic Finishes <i>Candy Concentrates,</i> <i>Ghost Chrome, MirraChrome,</i> <i>Prizmacoat, Crazer, Crystal</i> <i>FX, Mystic Spectra FX,</i> <i>Eclipse, Flakes</i></p>
--	---


The World's Most Exotic Finishes
Authorized Distributor



shaft 3 3/4 stroke. Electric water pump crank trigger and MSD dist, Barry Grant carb. Ran 9.50 et at sea level in 2500 1b. Car. \$6900. PH. Greg 250-317-1204 greg.kilmartin@yahoo.ca Kelowna, BC D1

565 BBC - Just freshened by Kenny Gilmore. 4.60" bore Merlin II block, 4.25" stroke Lunatti crank, Manley I-beam rods, JE 13.9:1 pistons with file fit Plasma Moly rings, Lunatti cam and roller lifters in bronze bores, 260# average valve spring pressures, ported Dart 360 heads, Dart intake manifold, Clevite bearings and ARP studs. Estimated 900 HP. Ran 7.94 @ 169 mph in 1900# dragster. Asking \$9500. Call 403-510-0843. J1

SBC 358 CI 12.5 : 1 Nascar Engine SB 2.2 Block, Heads and intake, Jessel, Rockers, Lifters and belt drive. Comp Cam billet roller cam (50mm Needle Bearing) Endura-Tech Valve springs, Del-west titanium valves, keepers and retainers JE Forged Pistons, Sonny Bryant billet crank Carrillo rods, Dailey engineering 5 Stage dry sump, SS Oil Pan, Full ARP stud kit top to bottom ATI Balancer / Flex Plate. Aluminum valve covers with built in oil sprayer bars. Only about 3hrs run time on new, pistons, rings, bearings, valves, springs, retainers, keepers, push rods and cam. Built as an endurance racing engine with about 750 HP at 7000 rpm will make about 850hp at 9000 rpm with a different camshaft. \$10,000.00. Call Felix Bergeron at 780-618-7537 F1



Zane Southgate
Boss Man

Box 5 Site 4 R.R.#6 Calgary, Alberta T2M 4L
Tel (403) 285-1099 Fax (403) 280-1027
emailzanes@zeeps.ca www.zeeps.ca



SIR named the 2010 NHRA Northwest Division Summit Racing Series Track of Year

Saskatchewan International Raceway, a drag racing facility located near Saskatoon, SK, announced today that it has received the 2010 National Hot Rod Association ("NHRA") Northwest Division Summit Racing Series Track of the Year. The award was presented by NHRA Northwest Division Director Jonathan Adams at the Division's annual Champions Banquet held at the Tulalip Resort Casino near Everett, Washington on January 8th. The annual Champion's banquet recognizes the outstanding performance of individual racers, crew chiefs and racing facilities over the past season. The award is presented annually to an NHRA Northwest Division member track that has developed a highly successful Summit Racing Series program at its facility and whose racers have been successful racing within their NHRA geographical division. The NHRA Northwest Division includes the provinces of British Columbia, Alberta, Saskatchewan, and also Washington, Oregon, Idaho, and Montana in the USA.

Of the seventeen NHRA member tracks within the Northwest Division, eight were eligible for the Summit Racing Series Track of the Year Award in 2010. This is the first time that SIR has won an award such as this in its forty-four year history as a member track of the NHRA. The Summit Series Track of the Year award was accepted by SIR track Manager Shawn Zezula. Zezula has been track manager for ten years and feels that SIR is very deserving of the award, stating that he is "very proud of the recognition SIR received as well as of the distinguished accomplishments of its racers."

Trevor Jacek, president of the Saskatchewan Drag Racing Association ("SORA"), which owns and operates SIR, echoed Zezula's comments, stating "It is great for our track to get divisional recognition. Over the past several years our organization's members and sponsors have worked together to improve the quality of our facility and our racing programs and we look forward to improving our reputation again in 2011 with a record number of events at SIR."

The 2011 SIR racing season runs from May 1st to September 25th.

About SIR

SIR is a 1/4 mile drag racing facility located thirteen kilometers south of Saskatoon on Highway 11. SIR runs a local points-racing series, a street legal racing program and other special events. SIR, which was opened in 1966, will host twenty-eight racing events in 2011. For more information on SIR, please visit www.racesir.com.

About Saskatchewan Drag Racing Association Inc.

SORA is a member owned not-for-profit corporation. SORA has operated SIR since 1986 and has owned it since 1993. SORA membership currently totals 250 members and is open to the general public. Membership information can be obtained by contacting the organization at info@racesir.com.


GEAR VENDOR Overdrive unit, stand alone unit, \$1200.00
obo Call Don 403-872-0250 D1

WANTED- Halibrand wheels, call with what you may have
Call Don 403-886-7663 D1

BAE 511 cubic inch motor For Sale
BAE Billet block, 4.310 bore, BAE 5 fat heads with rockers & valve covers, 4.375 stroke crank, New GRP Rods, New JE pistons, Pleuger Dry Sump Oil Pump, MSD 44 amp mag, box & coil, Sitko Mag Drive, BAE magnesium blower manifold, All parts are used unless otherwise noted
\$25,000 obo for complete long block w/ spares
Call 780-910-7129 or email n_sitko@hotmail.com J1

Ford 9" Pro Street Differential - Locker 411 Gears
Wilwood Disks. Selling a 9" posi differential out of my 55 Chevrolet. It was built at a cost well over 4K and includes a Detroit Locker 9" center section, Richmond 4:11 gears, Bear pro street axles 35 spline, Wilwood Disk brakes and calipers, and 1/2 x 2" studs on Chevy 5 on 4.75 pattern. Housing is powder coated black with leaf spring support plates. Will fit 55 / 56 / 57 Chevrolet and other car bodies using leaf spring suspension. All premium parts throughout and had approx 5000 miles street use on it. Priced at \$2000.00 with disk brakes. Call (403)669-4035 J1

**Licensed mechanical, welding & machine shop w/full services in
Customs, Hot Rods & Restoration**



**Portable Services ~ We will come to you!
Tig welding, full vehicle wiring,
general insurance inspections,
pinstriping & frame fabrication.**

**Pinstriping, gold & silver leaf, lettering &
kustom art, metal flake, fade & paneling**

**Ph: 403-990-5552
email: dirtydooley@hotmail.com
Calgary, Alberta.**

Big block Mopar, One set of TTI 2" primary/3.5" collector Ceramic coated headers, Schumacher big block conversion mounts [Fits darts, dusters, demons and scamps 1966-1973] and a big block C-body oil pan to fit the same for the conversion. Also have an aluminum Radiator that fits A-Body for a little extra \$. Sorry no pics. Willing to trade for a good running 5.7 Hemi engine. Call 1-204-362-6828. J1

Complete NOS setup for a BBC, Brodix intake, Holley carb, 250hp NOS kit, wired & plumbed, fuel system, 3 NOS bottles (full) all hoses & lines, bottle blanket, bottle warmer, brackets, came off race car & not going to use so have everything required to bolt on & go! Asking \$1600 OBO. Also have a pair of Moroso polished alum BBC valve covers, \$380 US new, asking \$175/pair. Also have Moroso # 22640 Vaccu pump system asking \$200. Moroso BBC water pump avail. Call Ron @ 519-872-6886. J1

Race Power Glide, bell housing cut off, deep al. pan, ATI trans brake, 7 ATI clutch, hardened input shaft and drum, new rebuild - 0 passes, trans shield, JW 157 tooth flywheel for SBF, JW bell for SBF, call Don 1-204-697-5041 press 0 M-F 9-5 or 1-204-866-3516 J1

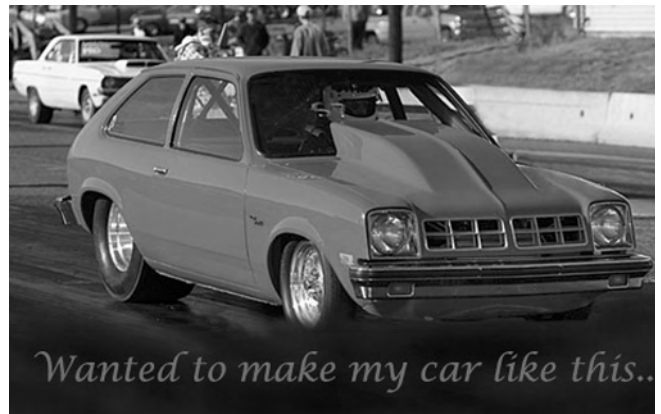
New BBC parts for sale. Most are in the original boxes. Prices are in Canadian dollars. Private sale. No tax. No freight out of the USA & no brokerage fees. All prices OBO. No low balls please. Brodix -3 XTRA "O" CNC ported heads (332 cc intake runner flows 424 + CFM @ 0.700 valve lift). \$3995. Brodix # BM2027 Tall Deck BBC single plane intake manifold,\$375. Crane # 13570-16 mechanical roller lifters. BBC with tie bar,\$650. Holley #80672 1050 CFM Ultra Dominator carburetor,\$1025. Jesel # KSS-057070 Sportsman Series shaft rockers. Designed for Brodix - 3 XTRA heads,\$1,000. Titan G-rotor Sportsman oil pump,\$500. MSD # 85561 Pro Billet magnetic pickup electronic distributor (with slip collar). My price is \$235. MSD #31233 8.5 MM Super conductor wires, \$75. McLeod # 810152 Mini Starter,\$235. ATI # 917060 Balancer. 7.074-inch diameter BBC internally balanced,\$300 (sale pending). Brodix 2018 1X4BBL (4150 Holley) BBC single plane intake, oval port,\$369. Crane # 13643-16: 3/8-inch pushrod set, BBC tall deck,\$140. Fel Pro # 1866 One-piece oil pan gasket, Gen V & VI BBC with one-piece rear main seal,\$25. Custom all-new 572 cubic inch BBC short block for sale. Not a GM crate motor. Built with all new high end components including a CNC-machined Chevy tall deck bow tie cylinder block, GM Performance Parts (Callies Racing) 4340 crankshaft, GM Performance Parts (Manley) H-Beam connecting rods, Clevite bearings, CP flat top pistons, CP wrist pins, 0.043-inch

Hellfire/low drag ring package, Crane 0.737/0.726 lift mechanical roller cam, and Jesel Belt Drive. Basically, this is an extreme power, reliable street-capable pump gas short block. Asking \$8,250 for the short block, which is less than the cost of the parts. Everything is new and never fired. Without Jesel belt drive & Crane roller camshaft: \$6950. OBO. Call 250-738-0530 J1

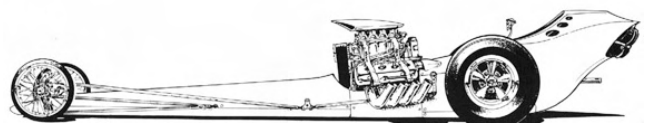
BDS 14-71 stage 4 blower for sale. Its in excellent cond, doesn't require stripping. \$2900, Call me for top and bottom pictures if interested. 403-276-1423, 403-650-4541 J1

FULL Nitrous bottles: Ten pounds, \$150 each (2 left).BBC Bowtie Block. Four bolt, 4.610 bore, notched for stroker crank, cut for O-rings, 10.147 Deck height, Needs two sleeves,\$450.CLOYES Timing Chain for BBC 93110A-10 Hex-a-just. Excellent, \$85.BBC Flex plate (SFI expired) TCI, B&M \$20. Colin at 403-588-5666 or email: cbmullaney@gmail.com J1

Stroud 32A-20 Fire Suit,2 piece, red with black stripes, built in arm restraints, Current until 2014,fits 6ft/210lbs,just cleaned \$750.403-741-4261. tmacracin@hotmail.com J1



1977 Chevetttes and I have both repair manuals. One looks like it has a Dana rear-end.The other Chevette is completely stock and a runner. I have an unassembled roll cage, headers for SBC engine. There are extra rims and tires and misc parts. Glass is all good. One car has a sun roof. I have a 1974 Cadillac 500 cc engine disassembled, ready for new parts. Asking: \$995.00 O.B.O. Contact: Moe @ 1-403-274-4900 F1





Parts Bin

e-mail ads@quick-times.com

CUSTOM AUTOMOTIVE

SPECIALTIES
RACING ENGINES

From Towing and RV to Hot Rods, Daily Drivers and Muscle Cars for Street use to the serious Drag, Boat, Road or Oval Track Racer. We build them all !!

In House
***Stuska 1600 HP Engine Dyno**
***Hines Computerized Balancer**
*** Superflo SF 600 Flowbench**
Call us today, We'll handle whatever you need!

Phone 780-466-1992
 Fax 780-462-0826
 cas1@telusplanet.net

6205-76 Ave, Edmonton, AB
 T6B-0A7



HDF GREEN LIGHT
Race Car Insurance

DOUG FARNELL

Main Floor, Energy Square, 10109 - 106 Street, Edmonton, Alberta T5J 3L7
 Bus: (780) 488-0921 • Toll Free: 1-800-567-2048 • Fax: (780) 425-4830
 E-mail: doug.farnell@hdfinsurance.com

double keyed damper, \$3000. Call 780-370-8560. F1

Custom Model A Hot Rod frame, 2x4 tubing, tapered front and back, flat front crossmember, frame notched for spring clearance, setup for SBC turbo 350, c/w front 4-bar mts. Vega steering box mt., triangulated centre dropout crossmember, new dual master cyl. brake pedal assy. running brd., mts., and rear upper coilover mts. Frame is kicked up in the back 3.5 in. to lower car, Finished car will have COOL Hot Rod stance. \$2750.00. Call 604-574-5259. F1

BBC Pete Jackson gear drive, \$100. 7 1/4" Fluid damper, internal balance \$250. BBD aluminum water pump/housing, \$150. Edelbrock performer RPM 440, \$100. Misc, 2" BBC headers off of 68 Nova, \$150. 4.56 gears for 12 bolt car rear end, \$150. 5.13 gears for 12 bolt car, \$150. 4.10 gears Dana 60-factory gears, \$50. 4.88 gears Dana 60, \$150. 8 3/4" pinion snubber, \$50. 8 3/4" 3' wheel studs, \$40. Orange Jaz over flow bottle, \$25. Mallory 140 fuel pump & filter, \$100. Ask for Kevin 807-767-1502. F1

Wanted- 26 or 27 inch tall front runner type tires in decent shape, Don 403-872-0250 F1

6-71 Blower, blower setup for SBC complete less belt, blower rebuilt not run, carbs rebuilt, boost referenced, not run, new F1

Powerdyne 9 PSI BD 11 blower. I had this set up to put on a SBC but never finished the project. Blower is basically brand new other than mounting it on the truck and trying it out. Will need a blow through carb to use properly. Also willing to purchase a blow through carb if someone has one for sale. Call 403-878-2885. F1

700 R4 transmission, still worked fine when pulled, \$250. Pair of 15x14 Pro-Star wheels, 4 1/2 backspace, 4 1/2 inch bolt circle w/14/32 Goodyears, \$325.00. 8" Ford rear end 56" wide complete w/brakes and cables, great for a rod, \$250. Acklands Mig welder with cart, \$275. Call Don 403-872-0250 F1




Red Deer
Speed & Custom

Specialty Automotive Repair & Accessories

Orley Neuert
403.356.9195
 4735 - 60 Street, Red Deer AB T4N 2N8

THE KIND'S AUTOBODY & RESTORATION SERVICE

KARS



(403) 346-4711



commoncents
 CONSULTING

4733 - 60 Street
 Red Deer, AB
 T4N 2N8

Ph. 403.342-2220
Fax 403.342-2045
 www.common-cents.ca
 E-mail: info@common-cents.ca
 Personal, Small Business & Corporate

taxation bookkeeping
 small business, residential
 accounting consulting
 controllership

fax ads to 403-886-8600

FEBRUARY 2011

4" chrome collector flappers, \$15. Barry Grant BG-400 fuel pump, new in box, \$400. Barry Grant BG-400 fuel pump, used with new seals and fittings, \$200. Barry Grant BG-5000 filter, new, includes new replacement element, o-ring kit and fittings, \$90. 2-NOS HI-FLO bottle valves with tubes for 15 lb bottles, \$30 each. 2- Chassis works nitrous bottle carry handles, \$5 each. 8 foot Morse cable, 3" stroke, 10/32 threaded ends, \$25. Autometer ultralite carbon fibre gauges, 10k tach, mech. Vacuum, volts, water and oil pressure, \$250. Stroud Super Comp chute with pilot, blue in color, very good condition, \$150. Stroud cam-lock harness, blue in color, SFI expired, \$80. 2-BBC flex plates (SFI expired) external balanced, 168 T-ring gear. \$30. Hoosier rear drag (pair) 33.5/16-15 C-07 (#18600), \$100. Goodyear rear drag (pair) 33/16-15 D6 (#D 2052), \$100. Goodyear dragster front, 2 sets 22/2.5-17, \$40. Strange 9" aluminum center section case comes with caps and adjusters #N-1904, 3.25" bore, \$200. G-Force 3-2A/5 one piece suit, Nomex IIIA, X-Large, fits 6'2", 200 lb, \$150. Reher Morrison cast valve covers, BBC, \$55. Call Brad 403-620-1950 or 403-275-8986(eves)

F1

SB Chrysler R3 race block. Part# P4676761 fully machined by ARL Engines current bore size 4.030 only has 20 runs. SB Chrysler cast iron W2 48% heads, fully ported by ARL engines. Intake flows 345 CFM part# 5007708. SB Chrysler W2 48% Mopar performance intake to match cylinder heads. This combo made 675 HP on the Dyno from 339 CI Dyno sheets to prove. This is an ideal package for a stroker SB for bracket racing. Price for all 3 packages, \$ 5300.00. Contact Bill 403- 512- 5258

F1

Holley HP 750 Carb Part # 80528 with power valve, changed to metering block, 20 runs, \$600. W2 A Body headman step headers modified powder coated, \$500. SB Chrysler Moroso billet electric water pump, Part #63565 almost new, \$200. Harwood 9" Aero Hood Scoop, Part# 3164. Still in box, \$220. Contact Bill 403- 512- 5258.

F1

Tired of the uncertainty of working for someone else. Be your own boss. Thriving southern AB automotive repair shop for sale. Excellent in town location. Up to date tools and equipment. Land and building included. Turnkey for \$275,000.00. Lets talk about payment options. Phone: 403-223-4170 or 403-635-0327

F1

Polished 6-71 BDS blower complete with polished rectangle port intake manifold with backfire port. Dual 700 CFM Holley double pumper with polished fuel lines, Enderle linkage kit, polished BDS air cleaner scoop with dual K&N Filters, polished pulleys & belt \$3800.00. Call 403-816-9090

F1

454 BBC, 4-bolt mains, main and head studs, steel crank, JE pistons, Eagle rods, roller camshaft, Brodix aluminum heads, port matched intake, roller rocker arms, etc., \$3500. Alone in the heads, there was maybe 10-12 runs on the motor, apart for inspection, \$6500. Call Terry 403-288-8181

F1

2 Mopar Centreline rims. 15 x 8, 5 x 4" bolt pattern. \$500.00 (new in box). 2 Mopar Centreline rims. 14 x 6, 5 x 4.5" bolt pattern. \$500.00 (new in box). Call Gary, 780-903-6037

J1

Old 1050 gas dominator rebuilt \$500. Barry Grant 750 with 850 base plate gas \$500. Holley BBC fuel pump NIB \$80. Dana 60 488 Richmond gears, \$40. '67 Camaro parts interior seats front bumper etc \$20. Aero scoop for 4150 with filter \$100. 588 BBC old pro mod engine runs short block or complete \$3500 for short \$7000 complete. Jesel BBC drop in roller lifters \$300. New Jesel pushrods 9.350 long \$80. Manley 3/8 guide plate and pro series ARP long rocker studs \$125. Old under the helmet head sock for dragster \$50. Injected 468 BBC \$7500. SBC 461 super stock head ported by Floyd Creek from Billings \$200. SBC 300 hp 350 heads casting #462 \$200. complete fibreglass front end for '67 Camaro 11 pieces \$1500. Phone 1-306-585-2852 ask for Doug.

J1

1965 427SC Cobra fibreglass body + misc other Cobra parts for sale. \$3000 OBO. 780-975-6858

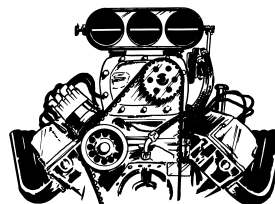
J1

Barry Grant BG-400 fuel pump, new in box \$400.00 Barry Grant BG-400 fuel pump, used with new seals and fittings \$200.00 Barry Grant BG-5000 filter, New, includes new replacement element, o-ring kit and fittings. \$90.00 2 NOS HI-FLO bottle valves with tubes for 15 lb bottles \$30.00 each 2 Chassis Works nitrous bottle carry handles \$5.00 each 8 foot Morse cable, 3" stroke, 10/32 threaded ends. \$25.00 Autometer ultralite carbon fibre gauges, 10k tach, mech. vacuum, volts, water and oil pressure. \$250.00 set, Stroud Super Comp chute with pilot, blue in color, very good condition. \$150.00 Stroud cam-lock harness, blue in color, SFI expired \$80.00 2 BBC flex plates (SFIs expired) external balanced, 168 T ring gear \$30.00 ea. Hoosier rear drag (pair) 33.5 / 16 – 15 C-07 (#18600) \$100.00 Goodyear rear drag (pair) 33 / 16 – 15 D-6 (#D 2052) \$100.00, Goodyear dragster front, 2 sets 22 / 2.5 – 17 \$40.00 pair Strange 9 inch aluminum center section case comes with caps and adjusters # N-1904, 3.25" bore \$200.00 Call days (403) 620-1950 or evenings (403) 275-8986

J1

PSI 206D Screw supercharger For Sale Coated by Cantrell March 2010, 2 years left on cert, PSI large funny car injector w/ barrel valve and lines, Complete with snout and pulleys, Taylor Motorsports restraint and bag \$11,000 obo Call 780-910-7129 or email n_sitko@hotmail.com

D1





- *THERMAL BARRIERS
- *DRYFILM LUBRICATIONS
- *EXHAUSTSYSTEMS COATINGS
- *EPOXIES*HALAR*KYNAR
- *NYLONS*RYTON

www.topguncoatings.ca

#101, 4715-13th Street, N.E.

CALGARY, ALBERTA T2E-6M3

Ph (403) 250-5393 Fax (403)250-5392

Goodyear Eagle slicks, 16x33x15, D-6, 1780 new, never used, been sitting awhile, \$275.00. Holley Blue pump with regulator, \$50.00. Holley jet assortment in plastic box 64T99, \$40.00. Autometer ultra light fuel pressure gauge comes with cup, \$50.00. Assorted coil over springs for front and back. Rear springs 110 lb. not sure on front springs, \$50.00. New pair of front strut Hyper coil springs 275lb., \$60.00. Dodge A Body upper control arms, \$30.00. Dodge 440 deep pan and pick up, \$30.00. Big Block Dodge external oil line adapter, \$20.00. Altronics Red Alert with 2 EGT Pyro's, \$250.00. RCI jacket X-Large 3-2A/1, \$30.00. RCI shoes size 10, 3.3/5, \$20.00. Indy cylinder heads tunnel ram for Big Block Dodge. Has bird catcher top, \$400.00. M1 intake for Big Block Dodge, \$100.00. Call Mike 250-549-4473 F1

TH 400, Full manual, deep pan with gear drive Dana 20 transfer case, \$1000 O.B.O. 2-14.50x35x 15 Boggers uncut on 10" 5x5 1/2 steel wheels. 2 9.50x34x15 Swampers on 8" 5x5 1/2 steel wheels. Never on pavement ever, like new, \$1000 O.B.O. SBC 1 5/8 fender well headers, \$100. Call Josh 403-886-4330. F1

Crane Pro-Series roller lifters, (BBC) #13552-16, 2 sets, \$150 each set. Crane triple springs, #99878-16, 1.620"OD, .600"ID with spares, \$50. Crane triple

springs, #99877-16. 1.635"OD. .655" ID, \$50. Brand new Crane double springs, #96886-16, 1.520"OD, .700"ID with spares, \$130. 7/16, .165 wall, 4130, 8 push rods. 10.925", \$50. 3/8, 4130, 4 push rods, 10.5", \$20. 3/8, 4130, 4 push rods. 10.35", \$20. Crane R-280 roller camshaft BBC, \$150. Fluidamper BBC external balancer 8" BBC, \$185. Jesel belt drive for BBC #32000, complete, \$400. MSD BBC crank trigger distributor for 9.8" block #84697, \$90. Accel 8.8mm suppression wires BBC, \$20. Accel 7541k, 5mm 300 race wires, only 5mm diameter, \$40. Dynatech quick-tune collector mufflers, coated, 2 1/4" primary, 4" outlet, 19" long #85-716402, \$300. Dynatech SBC down swept (coated) Dragster headers, 1 7/8" to 2" stepped primaries with Dynatech collector mufflers, comes with SB port adapter flanges and bolts, \$550. Call Brad 403-620-1950 or 403-275-8986(eves) F1

SBC Patriot alum. heads 190cc, 2.02/1.60, 64cc w/Crane Energizer roller rockers, ARP head bolts \$1000 OBO. Edelbrock RPM Air-Gap \$200 OBO. Headman 1-5/8 ceramic coated headers with 3" pipe and X-pipe \$300 OBO. Edelbrock 750 vac sec. \$300 OBO. Misc '69 Camaro parts: pass door, rear drums, spoiler brackets, conv spkr boxes, etc. 383 Stroker: balanced, SCAT crank, ARP bolts, 2.02/1.60, 76cc port matched, Crane 284, KB pistons, broke in on running ready to go \$4000 obo trevor_grover@keyera.com 780-682-2151 J1

351 Cleveland. 30 over, half filled studed block top and bottom. 12.5:1, Boss rods, Boss closed chamber heads, 750BG ALK carb, Milodon pan, Roller rockers, electric water pump. 515 hp. complete carb to pan \$5800 Dave 403-861-4862 J1

9 Inch War center section w/3.89 gears and mini spool, 28 spline, \$400. Call Don 403-872-0250 F1



EVERYDAY IS A GREAT FAMILY DAY!!!

BEST PRICES IN WESTERN CANADA
FOR FURTHER INFORMATION, CALL JOHN OR BARB
or check us out online at
www.cosbymotorsports.com

GET INVOLVED IN THE LATEST
TREND IN FAMILY RACING,
DISTRIBUTORS OF READY TO RACE JUNIOR
DRAGSTERS, PARTS AND ACCESSORIES



176 Shawinigan Drive, S.W. Calgary, Alberta T2Y-2W3 CALL 403-254-0757



63 Corvette Pro Mod, 115 inch wheel base twin frame chassis. Carbon body & Wing, TMR Full Floating Sheet, Rear end housing Mark Williams 9.5 Center With 40 Spline Gun Drill axels, Santuff Shocks & Struts with titanium springs, New Fire Fox 20 lbs Fire system, Speed wire Switch Panel. Liner rear tires. \$35,000 Rolling. Motor: 526 cu in Turbo BBC, new sleeves, pistons, rods, crank, valve springs, rings bearings etc. Fresh, zero miles. New Century Block, Dart Big Chief 2 11 degree heads victory titanium valves and retainers, Autoveri Dry sump, Peterson tank all lines and fittings sheet metal valve covers, Pro-mag 44, Moran injector Big Stuff 3 with tune and integrated Race Pak Dash, custom 114 billet single turbo. All tubing hot and cold with two Pro charger blow off and two 60mm HKS GT2 with AMS 1000 with tune Trans, Rossler Three Speed TH 210 XHD 10 Chance aluminum Bolt together. \$75,000 Turn Key. Ph. Don 604.788.1527 A2-6



1979 PONTIAC FIREBIRD, silver, mint, 502 crate, 500hp, 2 stage NOS with warmer & purge, 75 & 150 shot, 600 hp on dyno, Roll cage, line lock, 5 pt belts, 400 trans w/Hurst shifter, 3000 stall, 9 inch posi, fuel cell, car has 71K, 2000 on Drivetrain, duals, Centerlines, M/T's, ladder bars, \$18,500 Call 403-830-7129 O1-6

1987 Camaro. SBC Turbo 350 transmission. Best time to date, 12.4 seconds at 111 mph at Race City, Calgary. \$17,000 invested. Comes with 2 differentials. One has 4.10 posi and the other 342 posi. Call Greg for more info 403-481-9357 F1



1969 Plymouth Road Runner Coupe, 383hp, auto, fresh engine and trans rebuild, new front end parts, new mags, really turns heads!! \$35,000 call Gary 403-304-2207 O1



1953 Chevrolet 2 door post Belair. Rust free body, perfect chrome and stainless trim. Total Cost Involved independent front & rear suspension, master cylinder and pedal assembly with power front disc brakes, power rack and pinion steering, tilt wheel, all new Autometer gauges, new wiring harness. Interior excellent except for wear on the back rest of drivers seat. 350 built by Campbell Automotive, Edelbrock heads, intake and Carb, comp cam, Sanderson coated headers, 700r4 automatic, 10 bolt Nova rear-end. Approximately 3000km since built, great driver, new project under construction. \$24,000.00 OBO Call Cam 780-901-8201 O1-6



68 Camaro, 7.50 Chassis, Strange struts & Brakes, pro gears, new 40 spline gun, drilled axles, 33x16x15 Goodyears, 70% left, 990 HP Shaffirof, Zex perimeter plate, 25 passes since fresh, all parts upgraded, same with Dedenbear Powerglide. Too much to list, Best 8.65@156Mph 8.17@170Mph with 200 Shot, \$29,500.00. Ready to race. Call Paul 780-990-8795F6

'28 BLOWN TUDOR

Pics by Moe Putney, Action Sports Photography

Kelowna has several Rod and Custom car shops turning out a wide variety of "One Of" top notch automotive creations. This is one of them.

One shop, "Strong Arm Steel Fab" owned by Thierry Kozlovic has created this nostalgic 28 Blown model A Tudor. Thierry's wife Roxanne had to show him the "For sale ad" twice before he decided to take a look and buy it!

Thierry bought the sedan from Doug Moir just down the road in Winfield, B.C. Doug delivered it to Thierry on a skidoo trailer.

Three years of blood, sweat and tears later it was finished and put on display at the 2010 Vernon S&S where I just happened to be assisting the world famous WheelMaster erect his shiny wheel display.

Thierry tells me building this car means a lot to his family and friends as it got him through the hard times and kept him out of all kinds of trouble after his father had passed on.

Thierry's whole point was to build the car with basic hand tools, like old time rodders would have done. Not at all like they do today with \$300K worth of tools, high end machines and CNC made parts on the shelf.

Thierry picked up a 409 long block from the boys at Cutting Edge Performance in Kelowna. He had it stroked from the 409 to 452 and bolted on the original heads that were ported and polished by hand (the hard way). The heads breath through a set of custom designed headers. A package of two 850 Holley double pumpers were set on 6-71 blower, then mounted on a custom designed intake manifold. The oil pan was modified to fit the BB Chevy engine nicely over the BB main girdle. The frame was extended and boxed for added strength.

All this Hp was connected to a turbo 400 tranny, complete with a manual reverse valve body and a trans brake and a custom built 3500 stall torque converter. All the Hp makes it to a Ford 9" Moser custom fabbed housing sporting 35 spline axles hung by coil-overs. The rearend was kept in line with a set of 4 link parallel bars.

The stance was right, so the rear Radar rims were wrapped with a set of 16x10 Firestone F-1000 cheater slicks, while the front Radars sported 15x5 Coker tires.

The body was chopped & channeled 5". The custom roof was donated from a 2007 Chevy van and drip rails were added with all seams being welded and molded. The cowl was shortened by 1 ½ inches to accept the hand Fabbbed firewall.

Thierry customized and modified the front grill. The visor was hand built to look like a 30 to 31 model A. The windshield header was raised one inch for more visibility. The rear window actually rolls down and is flanked by two old french (1/4") B 17 bomber lights. There are ¼ inch louvers between the french brake lites. All the openings on the body are dressed up with lots of custom pinstriping, As well an 8 pt cage was then added. Bomber styled seats were hand fabed and given the Swiss Cheese look. The dash is also completely hand fabed along with the gauges flowing down from the dash to the floor.

A pop riveted toneau cover was added in the rear seat area. The model A frame was given the speed hole treatment starting with 3 ½ " holes and tapering down to 1 ½ " holes.

Thierry wants to thank the following friends for their help and time.

Matt Daniels for the never ending help, day or night. Body prep by Tyler at Liquid Steel.

Travis Smith for making and spraying the color at Tanjent Top Coatings, paint supplied by BASF. The boys at Cutting Edge Performance for the long block and George for the port work.

Corey at Sinister Finishes for the brush work.

Images by: Action Sports Photography by Moe
Article by: Moe Putney







BEST PICS OF 2010 FROM OUR FACEBOOK PAGE





CHECK US OUT ON FACEBOOK FOR MORE PHOTO'S



2002 Firebird TAFC Roller

125" S&W Chrome Moly Chassis
9" Full Floater with 35 spline axles

\$15,000 obo

**Call 780-499-6179 or
caltebb@hotmail.com**



www.quick-times.com



PRO MAX PERFORMANCE

Thinking of cross border shopping? The Dollar is strong so you want to take advantage and get that part you have had your eye on? Well we can help. Call ProMax on Brand Name Products at prices that will surprise you!

Custom Built Long Blocks, Short Blocks or Complete Drop-In Performance Engines.



Dart SB Chevy Blocks On Sale! Now \$1400 ! Less than Summit!



Volks VR6 being honed on Rottler HP6



LS1 torque plate honed .010 over



Marty Cochrane



The Pontiac Engine Experts



Rottler F68A Multi Purpose CNC Machining Centre



Gene Kucera

GREAT PRICES GREAT SERVICE - THE GUYS AT PROMAX HAVE 32+ YEARS INDUSTRY EXPERIENCE - WE KNOW PERFORMANCE!
PHONE (780) 465-0770 OR STOP BY 9616 - 51ST AVE EDMONTON, AB E-MAIL - mail@promaxperformance.com



1964 Chevy II Nova. BC Reg. 2 door post. Like new bucket seats. All leather upholstery. 350 cu in. Patriot alum heads. 350 tran. 4 link coil over. 3500 stall converter. Spare parts- 2 rear street tires & rims. 2500 B&N converter. New Superior front 2 in. dropped disc brake spindles. 3.55 Richmond street gears. Priced to sell \$18985.00. Phone (604) 538-9444 S1



1968 NOVA Rotisserie Restoration, 377 cu in, Tremec T56 Magnum 6-Spd; McLeod Twin-Disc set up w/ Hyd Clutch; "Quicktimes" Bell-housing; Baer Disc Brakes all round; Koni Adj Shocks; Comp-Engineering Frame Connectors & Traction Bars; Moser Axles W/3:73 Eaton Posi; Hotchkiss Suspension-Springs, Coils, Sway-bars; Brodix Heads; Crower Crank & Rods; Comp-Cams Solid Roller Valve-train; Hooker 1-7/8" coated headers & mandrel exhaust; MSD7 Ignition Package; Edelbrock Vic Jr; Holley 750HP Carb; NOS; 16" Vintique Billet Rally Wheels; Twin Sumped Electric Fuel System; Mint Body & Paint, Trim& Interior from Year-One & Legendary, ETC. Twice asking price of \$36,000. invested. Lots more detailed photos can be E-mailed for more info, Call 778-968-1701 Langley,

2002 Pontiac Firebird Ram-Air NHRA A/B/C Stick Car. Jerico 4-speed, Mark Williams rear assembly, MW Brakes and Driveshaft, Alf Wiebe Moly Cage, Holley EFI, Koni Double adjustables, weld wheels, Holley data recorder, Autometer Gauges, Sean Cour Paint. Fast, reliable, race car. Many time NHRA National event class winner. 9.98@ 133 at Pomona. \$50K with spare motor parts, spare computers, and extra flat hood. Jim Waldo (509) 375-0494 F1

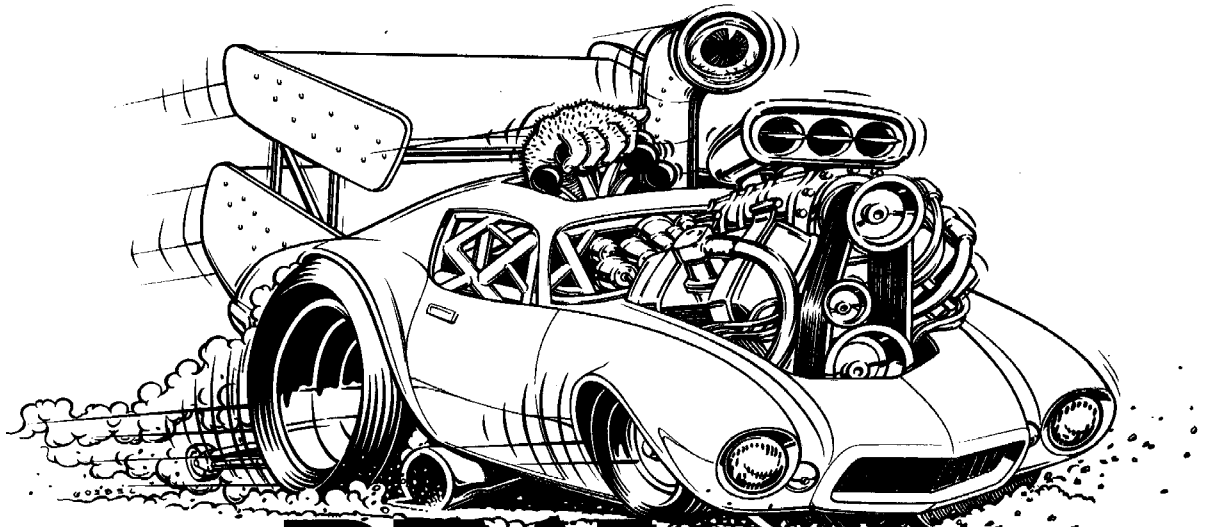


Hadmen 235 Fourlink Dragster Roller Only 16,750.00 Best 6.70@199 .980 sixty Hadmen four link Mono Shock Mark Williams set up Penske rear shock new Biondo Mega 450 and new power switch box in dragster. Comes with MSD Digital 7 and coil Racepak recording dash only. Strange all aluminum diff with MW through bolt 4.10 center Sptitzer Carbon wing New MW brakes and rotors. Wheelie Bars Hood Scoop, Welds with 33 x17 x15. Call Barry Daniluk. Cell 403-350-5025 N1-6



1970 Ford Maverick S/ST S/G S/P chassis, NHRA certified to 7.50, 505" Ford only 40 runs since fresh. Very competitive race car. All the best parts. Multi-time Divisional winner, National event winner, Division 6 Champ, Jegs all stars. Raced extensively on the NHRA Division 6 circuit. Runs 10.90 at 142 MPH. 9.30's all out at sea level. If you want a deadly consistent reliable car this is for you. Fresh 2 tone Red/Black paint done professionally by Corvette Specialties in Late 2010. Never ran with new paint. No Decals have been applied yet. \$22,000 Complete. Car in Kelowna BC. Call Dan @ 480-305-0190, email dan@thetoolplace.ca. F6

Former Wells Fargo nostalgia altered drag car. This car was famous in the early 70's. This car was probably the first altered drag car with independent front suspension, which it is famous for. The former owner, Bill Kydd, is in the Canadian Motor Sports Hall of Fame. You just need a motor and transmission to go racing. This car is in overall great condition. We are asking \$10,000 O.B.O. for the rolling chassis. Car in Ontario. For more info, call me toll free at 1-877-699-9919 F1



RED DEER SWAP MEET

THE RED DEER SPRING SWAP MEET

SET UP FRIDAY NITE, SWAP OPENS AT 8 A.M. on SAT. MARCH 26th 2011

The perfect time to clear out those unnecessary items no longer required and a great place to find those things you need to complete your current project, you'll find it or sell it here at Alberta's Centrally located Swap Meet at the Westerner!

"THE ANNUAL SPRING SWAP MEET"

AUTOMOTIVE-RESTORATION-ANTIQUE-PERFORMANCE-COLLECTABLES-LITERATURE-
DIECAST-TOOLS-EQUIPMENT-NOVELTY-NOSTALGIA AND MUCH, MUCH MORE.

Table spaces only \$40.00. (includes table) Vehicle for sale spots \$45.00 (car or truck only)
Add 5% GST, Commercial vendors are always welcome.

Name _____ Address _____
Phone(_____) _____ City/Prov _____ PCode _____
Space(s) Required _____ X _____ Total + 5% gst _____
Additional info _____ Need Power? Call GES. at 403-347-7144

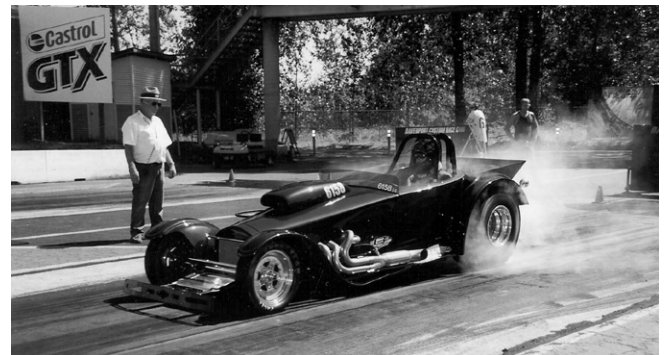
Quicktimes RR1 Penhold Alberta T0M-1R0
For more info call us at (403)886-7663
www.quick-times.com



Top Sportsman Bickle Grand-Am. Five Star Carbon fibre body, Complete carbon interior including tubs, tranny tunnel and dash. Auto meter gauges plus race pack v-300 with 8 E.G.T.'s. Safecraft fire system, dual Stroud launcher chutes, coated headers, American Racing Bead locks on rear with new Good year 34.5" slicks with 6 runs, Mega 450 box, Digital 7 Ignition, Spaghetti menders NOS controller, wired and plumbed for 1 NOS system, comes with 1 full 10 lb bottle, Harris bottle heater system, Koni Electric shocks, Magnafuel 625 Pump, Hurst shifter with Biondo shift solenoid, Complete Mark Williams sheet metal diff including 4.30 gears, Gun drilled axles, thru-bolt center section, aluminum rad with integral Stewart water pump, New 16 volt AGM battery. Mark Williams driveshaft. This is an actual pro-stock car built for Tom Martino but is far from a worn out pro-stocker due to it's limited use since new, It will fit a 6' 250 lb body comfortably. Has Current 6.0 IHRA and NHRA tags, all belt, diaper, window net cert's current. Equipped with a Schmidt 632 dynoed @ 1278 HP, Dry sump, CFE Big Chief 18 degree NOS Heads, Jesel Valve train, Speed tech fogger, 2 quick fuel 1250 Dominators, CFE prepped Tunnel ram, Dedenbear P/G case with all the best hardware, just rebuilt by Aces High, case and liner also just re-certed by Reid. 0 runs since re-done. Coan bolt together convertor with 2 stators, just motor and NOS. Runs mid 7.50's at 186 MPH @ 5000 + ft straight up. Tested the NOS system once with a 250 HP shot 1.6 seconds out of the hole and only on for 4 seconds and ended up running a 7.25 @ 196 mph. This car hooks awesome and with a 400 Horse NOS tune up should run in the 6.90 range at 5000 feet. Selling turn key only, \$74,000. Absolutely no part trades unless it is a complete and immaculate 8.50-8.90 Junior dragster. Phone Dave @ 403-357-4440. Red Deer J1

1997 Rear Engine Dragster 226" Rear Engine Dragster - Hard tail (Chassis updated in 2003 by Jim White Race Cars) 20" wide cage, Simpson chute, Autometer gauges, B&M Bandit Shifter(air shifted)Wildwood Brake rear brakes, Chrome 9" Ford rear-end housing, Front. A-Arms, Optima dry cell bat-

tery weld wheels Pro Stars (front & rear), Mickey Thompson 16.5-33-15 rear slicks and front runners dual Holley Blue Fuel pumps with regulator, Aluminum Radiator and cooling fan, ShoGun water pump, 450 Mega delay box, NHRA Certification - Certified to 7.50, 438 BBC, 13.5-1 compression, polished and balanced internals, Aluminum rods, Dart 320 Aluminum cylinder heads, Comp cams roller Cam -.726 intake -.714 exhaust, Brodix intake with a 1050 CFM Dominator carb, Dedenbear throttle stop, GM ATI Shorty Powerglide, ATI 5000 RPM stall converter, Turbo spline, Pro Tree ATI trans brake fab Ford 9" diff, 4.33 gear ratio, Strange Axles & spool, aluminum center section, Will sell Rolling (\$13,900.00) or Turn Key (\$19,000.00) - Open to reasonable offers. For more information - Contact Greg 306-388-2558 J1



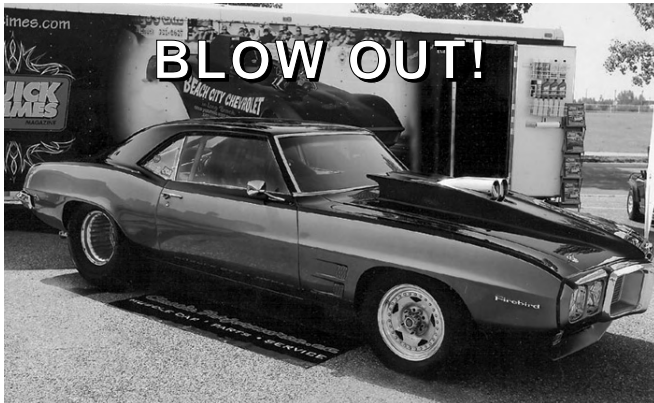
Brogie Roadster '27 'T Ford. Fresh 468" BBC. Mega 400 Biondo Stop A1 Glide. TCI Conv. Mark Williams 9" Diff. With 24" Haulmark trailer. \$25,000 turn key. Call Brian, 403-969-9230. J1



91 Ford Probe S/G, S/C, Top Sportsman car. Certified to 7.50. Zeeker chassis. Shafiroff all aluminum 582. Dedenbear cased glide, ten clutch, 180 straight gear, fully rollarized. 9 inch Ford 390 pro gear. 7al-2, delay box, CO2 throttle stop, custom paint. Best - 8.13 @ 168MPH. \$54500 complete. Dave 403-861-4862. J-6

Spitzer Jr. Dragster for sale with "fresh" 2009 Pure Power Bandit engine and Polar Pro clutch. Chromoly frame and new slicks. Runs easy 7.90's at 85 mph w/ 160# driver! Ready to race. Asking \$7,900 Email: a josephson@saktel.net for pictures and details J1

PICTURE ADS WORK!!



Pro Street 69 Firebird, 440 BBC, forged pistons, 990 heads, Team G, 850 Demon, NOS Cheater, Turbo 400, narrowed 9 inch, Strange nodular center, 4.56, locker, Moser axles, 4-link, QA1 Coilovers, 6 pt cage, new pearl/candy paint, Autometer, Cheetah command center, Recaro styled seats, new Hoosiers, 3 inch mandrel exhaust, much, much more, 40K Invested as well as a lot of sweat equity but it has to go...Turn key \$23,500.00 and may Sell as a roller. Orig.Cali. Car Call Don 403.872.0250 D1



1959 Chevy Pro Street Pick up, 454, Turbo 400, 9 inch Ford, 18.5 Hoosiers, Centerlines, new disc brakes, new coated headers and custom exhaust, orig Montana truck, 90 percent ready. Blow out at \$12,500.00 Call Don at 403.872.0250 D1



15 MPG and 12's during the same day! 78 Cutlass Salon with 455 Olds, SDS EFI (no laptop needed), Mondello cam & valves, Edelbrock, headers, T400, 12B posi 3.73, cage, Centerlines, all Oldsmobile with 400HP at tire on dyno, \$10,000. PH. (403) 519-7212



1973 Dodge Challenger Coupe 340cu in, 4 speed, fresh engine and trans, new front end parts, plum crazy purple, new exhaust and brakes, fun to drive. \$35,000 call Gary 403-304-2207 O



240" Boulton Dragster, Current 6.0 NHRA cert. Carbon Fibre floor, seat, dash and K&N amp; scoop, 20" cage, Simpson Camlocks, Dedenbear Lightning, Aeromotive Fuel system, MSD 7AL3. Amazing paint by Baker Boyz Customs, Wilwood, JFZ brakes, Mark Williams 9", Axles, 4.10 or 4.30 gear, Hoosier 33.5's on Cragars, new front runners on Spinwerks fronts, ChassisShop wing, B&M amp; trans cooler with fan. Optima battery. Stroud parachute with new cable, pilot & bag. \$17,500.00 obo. PH. Mike 780-919-0037



1987 Chevrolet Camaro Race Car, 468cu in, 2sp glide, trans brake, nitrous, 9in ford diff, 4.56 gears, runs 9.60 @ 141mph. Will sell complete or as roller. \$28,000 call Gary 403-304-2207 O

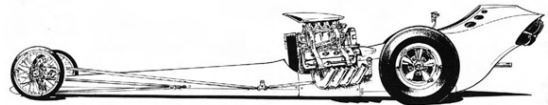
66 Chevelle race car, 2x3 Rectangular Tube Chassis Car Mild Steel Funny Car Cage N.H.R.A. Certified 8.50 TIL 4/12 Strange Front and Rear Suspension Wildwood Front and Rear Disc Brakes and Master Cylinder and Brake Pedal VFN Fibreglass Front End/Hood/Trunk and Rear Bumper Strange 9" Rear with 4.57 Gears Pro 4 Link, Wishbone and Anti Roll Control, Car Fully Updated Winter of 2009 Selling as Roller, No Engine and Trans Set up for BBC and TH400 Much more \$17,500.00 Call 780-993-6860 D1



1985 Z28 Camaro, T roof, 400+ hp, sb 400, bored 30 over, 10-1compression. Pro comp cam, crane rockers, heads planed 10 degrees and ported to match 202, MSD pro billet distributor, Holly 750 with

aluminum bow tie valve covers. Borg and Warner 5 speed, performance clutch, NewTAs. \$7000. Call Bill 780-865-5731 N1

2007 Strike Force Prowler. 145" WB Jr. Dragster 1pc Black gel coat body ready for paint. 18" hoop, semi lay down dual disc brake, set up 3.25 pure power. Billet Pro Stock motor gauged engineering GX7 Billet clutch system. 415 chain, splined jackshaft Mychron3 660 data logger, Coleman mini starter. Small 1 pc ProFox Race Suit, new in 2008. Small G-force helmet, smoked and clear lenses, small G force boots small gloves, arm restraints, and neck collar. This is a complete turn key 7.90 Jr. Dragster, operation including oil, spare belts, clutch weights, fuel filters, spare, clear wind shield, dolly for quad, etc. Comes with 150cc Giovanni quad also. This is a consistent Jr. dragster that was 2007 track champion at Eagle Motorplex, and includes numerous other wins. This is a semi lay down to allow the driver good peripheral vision. Jr. has 1.5 seasons on it and has been sitting in the shop since mid 2008. Asking 9200.00. Jr. is located in Prince George. Ph 250-564-9008 F1



HOT COATINGS
COOL COLORS

- **Ceramic Coating**
to Isolate Extreme Heat
- **Powder Coating**
in Endless Colors
- **From Small Brackets to Truck Frames**
- **Sand Blasting**

PERFECTION Powder Coatings

780.413.7578 Email: perfectc@telusplanet.net
16832 - 110 Avenue
Edmonton, AB T5P 1G9



More Cars

e-mail ads@quick-times.com



6.0 Cert 1990 Trans Am. Former Fountain Tire outlaw car. 6.0 cert chassis car ran 8.31 @ 163 mph in Med. Hat with 4700 ft. air. Has a new 582 c.i. BBC that makes 983 hp. On dyno. Has 6 pulls and 7 passes. Car wt. is 2350lb without driver. Ford 9 inch w/new 9.33 Pro Gears. Chrome Moly chassis, new Moly 4 link bars with nas bolts, Lamb struts, new Strange rear brake system. Transmission Specialties 5000 1.8 straight cut gears with 9 clutch forward pack. TCS Super Pump Pro Brake Roller tail-shaft and Moly yoke. All new chassis springs, Mega 450 delay box, start line enhancer, CO2 shift, new wiring and control panel, Stroud launcher chute. Engine 582 cu. Inch BBC short deck, alum Comp Elim. pan, Melling pump, Callies Magnum Plus 4.375 crank. Comp Star rods, JE .043 .043 3mm gas ported pistons. Dart CNC heads. T&D shaft rockers w/spring oilers. Custom cam, Crower .903 Hippo lifters, Comp timing belt, ATI balancer, Dart intake. PH. Jerry 403-526-1160, work 403-527-9911



2008 Junior Dragster -Racer Pops Gunslinger 3x3 Blockzilla, Polar clutches, dual brakes, 4 window, Digatron, crank supports, Grey powder coated chassis. Super clean (8.90) car. \$8500. 250 785 2849 Jason (delivery possible) J1

1974 Pontiac Firebird, 388 CI SBC built by Bel Engines (2007), Dynoed at Dynoplus - 600HP/540 ft lbs, Ford 9" c/w strange carrier NHRA/IHRA chassis cert to 8.50, Best E/T 10.23@134MPH, \$20k, Also available, 20' SWS Mirage enclosed trailer, new springs, new rubber, winch, workbench, 12V/120V lighting, \$6000. Contact Rick rcbrait@telus.net or 780-532-1602 F1

PICTURE ADS WORK!

Sell it here!!

Picture ads work!

\$59.95+GST till it sells (up to 6 months)

ads@quick-times.com



Champion Bus Conversion Race Car Hauler 20 FT. \$21,500.00, Fully enclosed Race Car hauler custom built to haul Pro Mod type car (very Low). New, 444e Inter-cooled Turbo Diesel, new brakes, exhaust, Warn Winch, Power-lift door, Air Ride, suspension, New Leater Air Ride seat, all aluminum construction and tool boxes Ph. Don 604.788.1527 A2-6

2005 Cosby junior dragster with a JR Race-car stage 4 ZR motor (upgradeable to largest ZR motor), JR 340 Salisbury clutch, and JR centre pull motor plate and runs 10:30 with 120 pound driver. The car has a Digitron tach and new seat belts this year. Comes with starter, race suit, neck collar and wrist restraints. \$6500.00 obo. Call Stefan at 403-872-6440 or email stefan689@gmail.com J1

1970 Nova. Full round tube chassis, 8.50 certified. Strange struts. 4:88 35 Spline Dana 60 4 link. 14.5 32 Hoosier slicks. Harwood Fibreglass front clip, doors, bumper and trunk lid. Powerglide 5600 Hughes Converter. All electronics for super gas. Set up for SBC. 2540 lbs. with SBC. 185 lbs. driver. No decals. Dark blue paint. Rolling with tranny and convertor, \$14900. Call Mark 250-762-3711(days) 250-768-7316(eves). J1

LOTS OF OLDER MODELS IN STOCK!



DEN'S REPAIR
FOREIGN & DOMESTIC
USED AUTO PARTS

RR1, SITE11, BOX2
BOWDEN, ALBERTA

403-224-3766

OPEN MON-FRI 9-6, SAT 9-4



'02 Firebird Funny Car For Sale

125" 1999 Victory Chassis (new front half in 2005) Centerline front and rear wheels w/ used Hoosier tires Chromoly Fab Rear Housing with Mark Williams floater kit, steel center section w/ used gears, DJ Safety Bottles and Fire system, Side by side fuel & oil tanks, steering, motor plates for hemi, Butler lateral head pads, Carbon fiber roll cage shroud, ISP Pour-In Seat, Taylor 7 point harness, Used Taylor chutes, Simpson fresh air system Mounted C02 bottle, Aluminum belly pan, spare floor and side panels for chassis, \$18,000 obo for complete roller with body Call 780-910-7129 or email n_sitko@hotmail.com

SOLD

D1-6



225 Mullis Hardtail Dragster. 225 Mullis Hard tail Dragster rolling chassis, includes MSD 7al2, 3 step ignition system, Deadenbear Delay, Strange 4:10 gears, BG fuel system, glide transmission, Autometer gauges, M/T tires, etc, 16,500 Mike 780-885-4739, perfect condition, very very clean J3-6



70 Chevrolet Nova, Turn key 10 sec street/strip legal car. Colour is Maroon w/ Factory Black interior & 6 pt roll bar. 421 SBC 640 HP / 580 FT LB Dyno'd on 94 oct. Full MSD ignition system w/ crank trigger. TH 350 Full build w/ manual valve-body & 9" converter. 12 Bolt Chev rear 4.56:1 gear Strange New York Cup air Calvert Racing Mono Leafs and Cal Tracs Traction bars. Full Mandrel 3" exhaust system exits behind rear tires. Wilwood Disc brakes. Weld wheels w/MT Rubber. \$20,000 CDN. PH. (780) 983 8751

REDUCED



1967 Camaro RS, all steel Super stock legal, fresh 400 SBC/Turbo 350 Hughes Converter, 9 inch, 40 spline, sheet metal, ladders/wheelie bars, \$30,000 OBO Call 780-477-7354 Wade J3

99 Monte Carlo Roller- 6.0 tag, double rail, 115" wheel base, 1.04/60 ft. Setup for BB Chevy and Bruno/Lenco, Strange Pro Mod Struts, Sanyuff shocks, Weld Spindle mount, Alumaster wheels, Weld 16x16 beadlocks, 34.5x17 Goodyear tires. Carbon fibre tubs, powder-coated interior. Pro street headers, dual Stroud chutes. 20 lb Halon fire system, 9" Strange Ultra aluminum 3rd member, 40 spline gun-drilled axles and floater. 96" single wheelie bar. NEW PAINT. Very clean car. Rolling chassis only. Ran 6.90 200 mph at Vegas. \$32,000 USD. May take part trade. PH. 250-317-1204 greg.kilmartin@yahoo.ca will send lots of pictures O

REDUCED



225" Rear Engine Dragster. NHRA certified to 7.50 April 2013. Set up for SBC/BBC. Wheeler Performance Crate 383cid SBC all steel with solid roller, Victor Jr. 220 heads. Demon 825 cfm. ATI 1.82 Glide shorty w/ brake. TCS 8" 5500 Stall (1 year warranty left). 8.75 Solid Rear 4.56 - 35 spline. 8.96 @ 150 mph. All current SFI tags. Medium to Tall driver. More at www.out-atimeracing.com. Turn key \$19500.00 / Rolling Chassis \$14500.00 less engine, transmission & converter. Call Steve @ 403-934-3062 Strathmore, Alberta N1

PICTURE AD SPECIAL \$59.95 TILL IT SELLS*

PLUS G.S.T. FOR UP TO 6 ISSUES

Ya Snooze... Ya Lose!!

SUBSCRIBE
TODAY



SUBSCRIBE TODAY TO "QUICKTIMES CLASSIFIEDS"
\$26.25 incl gst gets 12 issues & an Online Subscription

SUBSCRIBE TODAY, YOUR WALLET WILL BE GLAD YOU DID...

FRIENDS NAME _____ ADDRESS _____
CITY/PROV _____ POSTAL CODE _____ PHONE(____) _____
e-mail _____ FROM _____

MAIL CHECK OR MONEY ORDER TO: (sorry no Visa or M/Card)

Please allow 4-6 weeks for first print issue, online sooner.

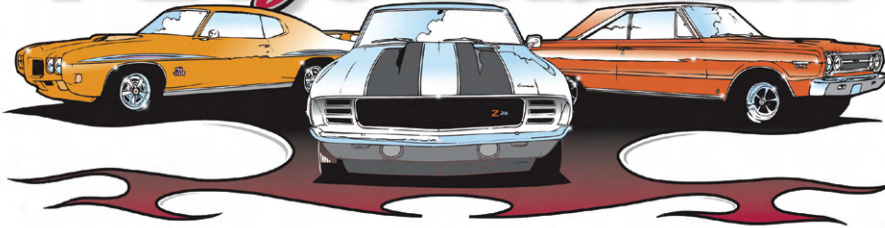
QUICK TIMES CLASSIFIED, RR1, Penhold, Alberta, T0M 1R0

Subscribers please note, in the event that Canada Post notifies us that your magazine is undeliverable or any reason, our obligation to you is complete. Please provide your current and complete address and update us if there are any changes.

AND CHECK US OUT ON THE WEB AT

www.quick-times.com

Classic Performance



Muscle Car Restoration, Parts, Accessories & Service

Call (403) 216.6060 or visit www.classicperformance.ca



#27, 1410 - 40 ave NE, Calgary, AB • tel: (403) 216.6060 • fax: (403) 216.6064 • admin@classicperformance.us

MAKIN' POWER



VP FUELS WESTERN CANADA

1-866-VP-FUELS

SHINY PARTS



Time to get the tool's out boy's...
There's work in the Shop that need's attention!!

CRAGGARS **AUTO SERVICE**

12920-156 St. #5 Edmonton, AB T5V-1E9
Ph. 780-454-5522

We can do...
"Roll bars"
"Cages"
"Mini Tubs"
"Frame Notches"
We can do that
as well."
and much more...

We Sell...
Strange,
AMS Boost Controllers
TRZ Suspension
ARC Billet Aluminum
Nitrous Bottle Brackets
and Heaters
and much more...



Your Muscle Car Driveline Specialist
 Muncie, Super T10, Mopar A833, Toploader,
 Ford M5R1-2, Antique Auto Battery

McLeod Performance Engineered Driveline Components
 *In stock — bellhousing, clutches, hydraulic systems, flywheels, etc.

RICHMOND TRANSMISSIONS
 * 4/5/6 speed transmissions

TREMEC TRANSMISSIONS
 * T5/T56/TKO 600 conversions

Yukon The Advantage
 * 10/12 bolt, 9 inch, 8 3/4 Dodge

GIBBS — mega penetrant, ultra lubricant, water repellent, corrosion inhibitor, **PAINTABLE**, and more!
www.GibbsCanada.com

1-877-GEARSTOGO (432-7786)

WWW.SUPERRUN.CA

Fun for the Whole Family!

REGISTER NOW!
 to win Early Bird Prizes

SASKATOON 2011 pre: 80

SUPER RUN
 WESTERN CANADIAN NATIONALS

July 29, 30, 31, 2011
 PRAIRIELAND PARK
 SASKATOON, SK - CANADA

HOT RODS - ANTIQUES - CLASSICS - CUSTOMS - STOCK - STREET MACHINES - MUSCLE - SPECIAL INTEREST

BUMPER TO BUMPER Auto Parts Professionals
 Application Online!

Kelvins

GOODYEAR SELECT
 MARKET TIRE (1976) LTD.
 CITY TIRE CENTRE
 CERTIFIED TIRE & AUTO
 ROSTHERN TIRE & AUTO

SuperRun 2011 Raffle V
 Easter Seals Saskatchewan

WIN a 1932 Ford Electric Car

Tickets \$2.00 ea.
 (Draw date Aug. 04/11)



Before



After



Old Fat Daddy Wrapper & The Wrappettes

snappy's
 Sign & Graphics Emporium
 Calgary, AB

Great graphics start with black and white ...



Scan this tag to unleash your creative side!

snappysgraphics.com



COMPETITION INSURANCE INCORPORATED

Offices in Calgary & Edmonton

www.competition.ca

The Silver Wheel and Custom Wheel plans have been insuring Specialty Vehicles for 30 years at great rates. We offer a quality Insurance product for vehicles used for hobby purposes.



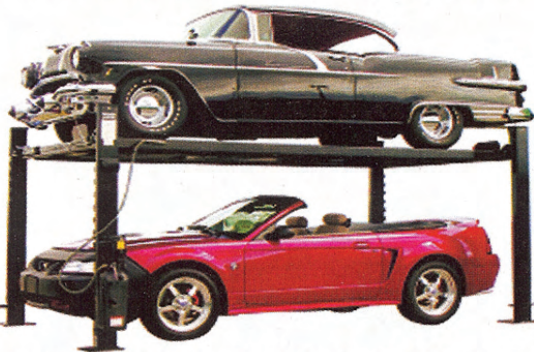
COMPETITION INSURANCE INCORPORATED PRESENTS
FINISH LINE RACE CAR INSURANCE
THE MOTORSPORTS INSURANCE SPECIALISTS



1-866-845-7843
CALGARY

1-800-454-5592
EDMONTON

THE #1 SELLING HOIST IS NOW ALI APPROVED
25 Years Experience Selling Automotive Equipment



All of Our Hoists Feature the Latest Technology

- Adjustable Internal Lock Ladders
- Posts are Cold Rolled Formed Steel
- Standard 2 Lock - Deck & Cable
- Built in a ISO 9001 Certified Factory
- Hydraulic Flow Restrictor
- CSA Approved Power Unit
- Braided Hydraulic Hose
- 4 Bolt Column Caps



DP10A, PP8SPY, PP8PPY, PP9PY, CR14, OR14, CR30, CR40, FML4, DP12/15

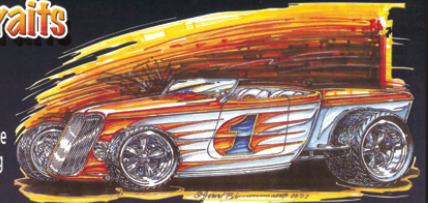
DP10A, PP8SPY, PP8PPY, PP9PY, CR14, OR14, CR30, CR40, FML4, DP12/15

Compare Features, Advantages & Benefits
Think Safety

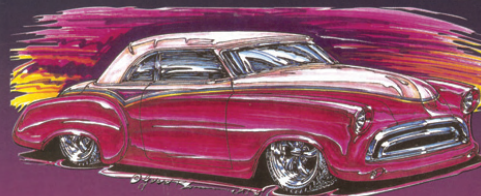
www.kennan.ab.ca 403-287-3021

AWESOME CONCEPTS & Auto Portraits

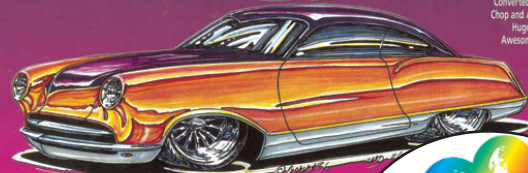
Want to know what that new project is going to look like before you spend thousands of \$\$\$ and hundreds of hours? We can translate your *dreams* into a concept drawing and save you from a *nightmare*.



Above: Ron Bougie's Rod Shop Special, a Swoopy 84 Ford Roadster Pickup, Mid-Engine 350 SR, Porsche Transaxle and Wild Early Truck Style Paint Job.



Left: Brad Permice's '52 Chevy Belair Convertible with Radical Mods Including Chopped Fold Down Roof and 2-tone Candy Red/Peach Pearl Paint.



Left: JF Launier's '52 Kaiser Converted into a 2-door with Radical Chop and Air Bag Louvering Featuring Huge 20" 72" Billet Wheels and Awesome 2-tone, Tangerine/Purple Paint Scheme.

Below: Mike Metzger's '80 Ford F100 Dually Crew Cab.

Phone (780) 468-7240

Toll Free 1.888.643.2339

5306 - 18A Avenue, Edmonton

gerardgraffix@telusplanet.net

www.gerardgraffix.com



fax ads to 403-886-8600

FEBRUARY 2011

1991 Camaro, Jerry Bickel chassis, 6.0 tag, dual frame rails, 16" beadlocks, 2 yr old full floater, set up for BBC/Lenco and 3 stages of NOS, On board fire system, 96" wheelie bars, ROLLING \$25,000 OBO Call Wade 780-477-7354



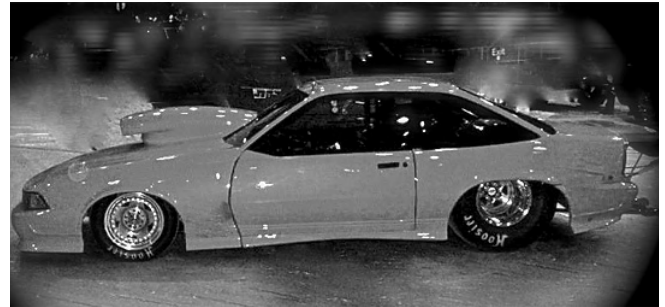
1993 Camaro bracket car LS1 front end conversion, pin-on Sunoco hood, pa K-member, strut towers gone, Wilwood font brakes, aerospace rear brakes, chassis engineering back-half, 10 point cage, 4-link, strange adjustable coil-overs, Moser 9" with 4.30 gears, all Autometer gauges, Kirkey Pro-street seats, painless switch panel, Percy's Speed-glass windshield, Powerglide Trans, TCS 5500 converter, Scott Shafiroff 434 sbc, Brodix heads, 14.5:1, Moroso vac pump, made 660hp to the wheels, runs 10.03 at 135mph in Medicine Hat, Dedenbear lightning L2 box, FAST wide band data-logger, BG400 fuel pump, brand new QFT 1050 carb, Greg weld fronts, hole-shot hole-star 15x12 rears with 31x13 MT slick, 2760 lbs w/o driver, car is ready to race! Building house. \$21,000. PH. Ryan. 403-581-7944. N1



Near new RH Race-Cars chassis, 526 KB olds, 1471 high helix, Allan Johnson heads etc, best of everything! Best of 7.00 at 200mph on very mild tune-up. Easy potential to 6.50 car. First place show winner, plus 2009 track champion. Only 58 runs. Must sell. Will consider partial trade for street rod. Motor and transmission both fresh. Turn key with trailer. This is a ready to race package! 40 gallons methanol, compressor, generator, and tools on board. Let's talk!

\$48,000 for all, or car only for \$38,000.

Call Dennis 1-250-804-3745. Can negotiate on partial delivery, or deliver to US border if need be. N1



1991 Cavalier, completely rebuilt in 2009, frame is Chrome Molly custom tubular chassis with a 25 point roll cage certified to 7.5 sec. Custom front tubular A suspension with Strange adjustable shocks, rack and Pinion steering, rear is a custom 4 link plus centre link and strange air controlled adjustable shocks. 4 wheel Wilwood disc brakes. Engine is a 555 BBC 900 plus hp, 1050 dominator carb, new Dart "Big M" Block, Brodix aluminum heads, Kelly crank, Eagle rods, Jesel roller rockers, Moroso pan and vacuum pump, Melling oil pump. Internally upgraded for NOS Dedenbear Power Glide, 6200 stall torque converter MSD Pro Billet crank trigger, MSD Pro Power coil. New Dedenbear wiring kit. control box, delay and cross talk computer module. Custom fabricated 9.5" rear axle, Strange Ultra Centre case, 35 spline & large crown gear rated to 3000 hp. 4:30 gears. This was a complete rebuild in 2009 down to a painted frame. New engine, electronics, brakes. Turn Key \$45,000.00 Rolling \$32,000 call (780) 699-4744 J6

SUBSCRIBE TODAY!

Chevette rolling chassis. 9" with 4:56 spool, Big Block motor plate, Lexan, 12 pt. cage, 4 wheel disc, convo pros, 14x32 M/T, lots left. much more \$2800.

Call Barry 604 463 8063

F1

Custom Engine Works
 Innisfail, AB (403)227-3446

- Restoration
- Street Performance
- Stock Applications
- Agriculture
- Full Engine Machine Shop
- Full Engine Parts Line

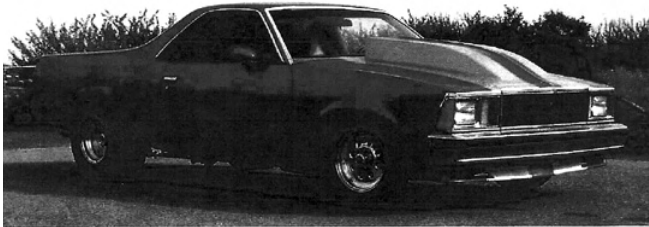
VISA MasterCard



e-mail ads@quick-times.com



1970 Camaro S/P. 2x3 frame. Bear A front end with QA1 coil over shocks. Strange brakes (front). Rack and Pinion steering. Set up for BBC and glide. Dana 60 rear, 456 gears. Ladder bar with coil over shocks. Wildwood brakes (rear). Wheelie bars. Simpson chute. Current 8.5 sec. NHRA tag. Full cage. Comes with front and rear motor plates, BG fuel system, MSD 7AL ignition system, Dedenbear delay box, painless wiring panel, headers, drive shaft with MW yokes, 1350 joints, rear tires - Goodyear 33-16-15, center line, front tires - front runners on pro stars 15x4.5. Asking \$ 12,500. Phone 403-816-2221(days)403-936-5988E D6



1980 Chevrolet El Camino. Set up for BBC turbo 400. 2-3/8 lemon headers. 3.5 full exhaust. MSD 7AL ignition switch. Mega fuel system complete. Full 400HP nitrous system. 6 point cage, swing out. 10 sec. NHRA spec. Bucket, console, power windows, tilt

steering. Roll control, trans brake switch. B&M shifter, reverse pattern. 9 inch Ford rear with 410 spool. 35 spline axle. Ladder bar, coil covers. 4 wheel disc brakes, Street legal with AB registration. 4 inch cowl hood, good paint and glass. Asking \$12,500 rolling. Phone 403-816-2221(days)403-936-5988E D6



1970 Nova SS. NEW Keisler TKO 500 5spd overdrive, Pioneer/ JL speakers W/ CD/MP3; tons of upgrades and new parts. 350 V8; 650 Holley, 12 bolt poly, 3.55 gears, power front disc breaks w/ line lock, no rust, straight, high gloss paint. Everything works. Original factory build sheet. \$23,900. Phone 403-670-9919 J3

1970 Nova .8:50 certified Morrison round tube Chassis. Strange struts, 4.88 Dana 60 4 link 35 spline. Harwood fibre-glass front clip, doors and trunk lid. Set up for Super Gas or Super Street. 2540 lbs. with 185 lbs. driver. Power glide 5600 convertor. 400 CID SB 700 HP. In-line throttle stop. Holley HP 950. Jim Bell 15 degree heads. 15:1 compression. Bowtie Block. Cola crank. Manley rods. J&E pistons. 14.5-3.2 slicks. No Decals. Dark Blue Paint. 9.90's at 144 MPH. 9.50 flat out in Mission. \$19,000.00 Turnkey. Phone Mark 250-762-3711(days) 250-768-7316(eves) D1

HAVING AN EVENT IN 2011??
SEND YOUR DATES IN BEFORE FEB. 28th
 TO HAVE THEM PUT IN THE NORTHWEST CRUISE CALENDAR

EMAIL
 calgarycc@shaw.ca
 or contact
 Les Edwards at 403-275-3830
 a.k.a. The Bubblegum man

HOT ROD PARTS QUALITY & EXPERIENCE

STREET ROD PARTS

Antique Auto Brookville
Aim Industries/Chassis Tech
Aldan Eagle Shock Absorbers
American Racing Wheels
Bills Hot Rod
Bitchin Products
Billet Specialties
Borgenson Universal Co
Classic Instruments
Currie Enterprises
Dakota Digital
Deuce Factory
Dan Fink Metal Works
Dutchman Motorsports
Downs MFG
EMS Automotive Products
Glide Engineering
Hagan Street Rod Necessities
Haywire Inc
Ididit Inc
Just A Hobby
Kugel Components
Lokar
MacGyvers Street Rod

Magnum Axle Co
Mullins Steering Gears
Nickel Machine Tool
No Limit Engineering
New Port Engineering
R H Jones Company
Rocky Hinge Company
Rootlieb Hoods
Sanderson Headers
Street & Performance
Smart Parts
So-Cal Speed Shop
Specialty Power Windows
Steel Rubber Products
Superior Glass Works
Tanks
Total Cost Involved
Vintage
Vintage Air
Walker Radiator
Wescotts Auto Restyling
Weld Racing Inc
Wheel Vintiques
Zoops Hot Rod Products



QUALITY PARTS & TOP NOTCH TECHNICAL ASSISTANCE

CALL US
(780) 444-2866

17350 - 108 AVENUE
EDMONTON, ALBERTA

www.wadsons.com

HOT ROD PARTS SINCE 1979

FABRICATION SHOP

CHASSIS FABRICATION ALL TYPES
STREET
PRO STREET
AIR RIDE

GENERAL STREETROD ASSEMBLY
CUSTOM PANEL FAB AND LEADWORK
SPECIALTY BODYWORK
PARTIAL AND TURN KEY CARS



1963 Chevy II Nova, runs, all in tack, \$4250.
Contact Mike 250-292-8348

J1

1994 LT-1 complete. has 120,000 km ran perfect, took out of car and installed high end stroker lt-4, \$800.00, ALSO, super T-10 4 speed with cast iron case and large output, took off cover to look inside, looks new, also have shifter and boot, pedals and linkage, bell housing, flywheel, bell crank and brackets, driveshaft and all the bolts, used clutch, complete everything you would need for changeover for Camaro or Firebird, not sure on the year, 1973 to 1981- \$1200.00, phone Bob 403- 328-3266.

J1

1956 Chevy Bel Air 2 dr post complete restoration 400 SBC produced 379 hp and 451 lbs or torque dynoed at Canadian Super Shop 3" exhaust lowered 2" auto drag lites, too much to list priced to sell \$34,000.00 1-204-837-1667

J1

Mopar 727 torque flite tail shaft 75.00 , 69 super bee front bumper re-chromed \$300.00. 2 '69 b-body doors, mint (no glass) \$800.00. '69 b-body hood hinges \$50.00. Factory Super Stock '68 aluminum

race hemi valve covers \$500.00. Edelbrock '69 six pack super stock intake with carbs and fuel line (rare) \$400.00. '69 GTX tail lights, pair \$125.00. Stock '69 440 valve cover push on breather \$150.00. New 2 field 90 amp alternator \$50.00. Ph. 604-612-1462 J1

TH-400 Trans, re-built with less than 500 miles. Comes with original convertor. Out of 1968 Big Block SS Camaro - original to car. \$1000 OBO. Also have Coan Racing pro street 11" convertor. \$900 original cost - \$400 OBO. 396 BBC - less than 500 miles on completely restored/re-built 325HP -396 out of numbers matching 1968 Camaro SS that was restored to concourse quality. Complete motor from carb to oil pan. \$3000 or offers. Also have Turbo 400 Trans from same car, original trans to car. Trans was also re-built at time of restoration with same very low miles. Original Convertor with trans. \$2000 OBO. Also have Coan Racing 11" pro-street convertor. Original cost \$900 - will sell for \$400 OBO. Call Phil @ (403) 612-5542 with questions or offers or e-mail: prempel@platinum.ca

J1

'69 Roadrunner.... needs engine work 440 six pack four speed 430 gears' new clutch fly wheel, new tranny, shifter complete new front end, brakes, etc. red with black interior, new carpet, air grabber hood, new custom 3 inch exhaust, oval tips, new 15 inch magnum 500, super stock leaf springs, new shocks, stereo in glove box, line loc, Autometer gauges \$19,000.00 obo 604-612-1462

J1

SUBSCRIBE TODAY!

Classic Air heater & a/c unit. New, never installed. Complete evaporator, condenser, diffusers flex hoses. Set up for cable controls. All you need is the compressor and lines. \$ 750. Call 204-955-5765 F1

Solid 350ci SBC with Edelbrock Performer RPM intake from 1970s Chev. Does not burn oil and starts up first try every time! Still running in my Camaro if you want to hear it in action but need to start on the motor swap soon. Not included with the engine as I need them for the next motor arecarburetor, water pump, Pertronics ignition, exhaust manifold, power steering pump, starter and alternator. Will include other Rochester Quadra Jet carburetor not used on this engine. \$800.00 OBO. Call Kurt at 403-255-5725 or email for more info - canuck_kurt@yahoo.com J1

1968 Camaro parts - too many to list but have many parts from a Big Block SS Camaro. All parts are restored and like new. Some of the major parts are: Original like new Big Block SS Hood - \$500, Repro Right (passenger) front fender - \$200, Radiator for Auto Trans car - \$200, Rally Wheels and like new Red Line tires - \$400, Power steering pump - \$100, Complete original A/C system with heater box, restored compressor, condenser, lines, etc. - \$500, Steering column, brake booster. Many interior parts like console, auto shifter, gauges, AM radio and more. Also, a custom TIG welded Stainless 3" exhaust system by Specialty Engineering in Vancouver - work or art, polished slash cut tips exit rear of car, complete with mufflers, all clamps, etc., fits a Big Block Camaro with stock style suspension and headers. \$1500 new - \$500. Canton Racing BBC oil pan for 68 Camaro. Call Phil @ (403) 612-5542 or e-mail: prempel@platinum.ca to make offers or questions J1

TRI-5 CHEVY/PONTIAC - 2 inch Dropped spindles for disc brake application, McGaughy Part#5557(NEW)\$280.00 Firm for the Pair Tri - 5 Chevy/Pontiac Front stock height coil springs(used one summer)\$85.00 Pr. Tri-5 Chevy/ Pontiac Drum brakes 1 pr For the front Complete w/shoes, etc. \$ 80.00 Pr. Contact Jim @ 780-473-4559 J1

New in packages left over from my restoration. 65/66 Mustang GT fender badges,\$20 for the pair. 65/66 Auto brake pad, [non disc] \$7. 64-70 P/S boot and clamp \$10. 65/66 passenger side running horse emblem \$10. 65/66 console door springs, your door will open/close perfectly now \$5 pair. 65/66 heater hose and clamp set \$20. NOS 65/66 Mustang Bendix Power Steering control valve and drag link, \$250, they are almost \$500 after market prices. 65/66 door jam switch, one only, \$3. 65/66 inside door latch bushing \$3. Package deal, \$280 for everything. Call Grant 604-531-3877 J1

401 Nail head, This engine is currently in a 1964 Buick Electra Convertible and is believed to be the original engine. The car has been sitting in storage for the last 15 years. It starts and runs well. It includes the long block with intake and carb. These are the legendary hot rod engines from the 50's and 60's and are great for a rat rod or restoration. The engine will remain in the car for a while yet and can be heard running. cobravii@shaw.ca 780-838-2308

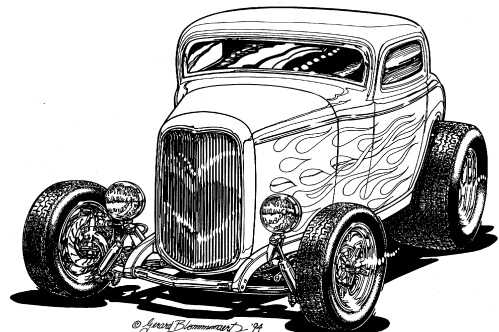
Wanted - 1967-68 Mustang fastback parts car. No drive train needed. Any condition Considered Call Randy 867-334-5043

Assortment of NOS & used, 1960s-1970s Dodge / Plymouth, collector car parts for sale. Some aftermarket items also available. \$10.00 & up. 204-837-9893 or notfragile48@hotmail.com

55 Chrysler Hemi, Super Hot Rod Project. 2 sets of heads, 2 cranks, 2 intake manifolds, 2 sets of rods, 1 set of pistons. Rare heavy duty nickel block. Located in Chilliwack call Pat @ 604-792-9244 during the day. \$1200.00.

Model A frame, 2x4 tubing, tapered front and back, flat front cross member, frame notched for spring clearance, setup for SBC. Turbo 350, c/w front 4-bar mounts. Vega steering box mt. New dual master cyl. brake pedal assy. Triangulated dropout centre cross member, rear upper coil over mts, running board mts. Frame kicked up 3.5 in. in back to lower car. \$2750.00 Call 604 574-5259

9" posi differential out of my 55 Chevrolet. It was built at a cost well over 4K and includes a Detroit Locker 9" center section, Richmond 4:11 gears, Bear pro street axles 35 spline, Wildwood Disk brakes and callipers, and 1/2 x 2" studs on Chevy 5 on 4.75 pattern. Housing is powder coated black with leaf spring support plates. Will fit 55 / 56 /57 Chevrolet and other car bodies using leaf spring suspension. All premium parts throughout and had approx 5000 miles street use on it. Priced at \$2000.00 with disk brakes. Call (403)669-4035



Trucks/Trailers

1-1972 Dodge 340 standard bore block, rods and pan. \$500.00. 1 set of under body headers for a 392 Chrysler Hemi. great for a street rod. 2inch primary 4inch collectors.500.00.1 Blower Shop Teflon stripped 8-71 super charger. polished and in good condition, also have a bearing and strip kit.2200.001-SB Chrysler 727 transmission. Over 6000.00 worth of A and A parts. Reverse valve body with a clean neutral. this the ultimate race transmission. also comes with a co2 Cheetah shifter , Biondo box and a trans shield with 3yrs. on tag. \$4500.00.1-JW-727 convertor 3700stall,has antiballooning plates,\$500.00.1 triple dog power pup by Bully dog power module for all diesels,\$200.00. Contact Hank at 403-660-8144 or email hankw@shaw.ca D1

1963 2 door Impala, was a race car in the 70's named Nostalgia. New 4:88 gears with locker (gears & bearings are brand new, never been run), Summers Bros axles. Stock front & rear suspension. All chrome, interior & exterior pieces are there & in place. Car is all together, not in pieces. Last had 409/3 speed auto. Has not been run in awhile. Frame is all cleaned & brakes all done. Front cross member is reworked to fit deep oil pan. Needs tranny tunnel otherwise floor pan is in great shape. Comes with new line loc, driveshaft, original fuel tank as well s 12 gallon fuel cell. Have a tilt column as well as a fixed steering column. Car needs paint. Can help deliver. Call Blaine or Candi 780-968-2778. J1



1987 Camaro. Small block Chevy. Turbo 350 transmission. Best time to date:12.4 seconds at 111 mph at Race City, Calgary. \$17,000 invested. Comes with 2 differentials. One has 4.10 posi and the other 342 posi. Call Greg for more info 403-481-9357 J1

Powerglide 2 speed transmission (less than 6600 miles on complete rebuild done in 2008) - \$600.00 OBO. Call Kurt at 403-255-5725 or email for more info - canuck_kurt@yahoo.com F1



2010 United Trailer 20' Car hauler, Black, 3500 lb axles, tie downs, roof vents, LED lights, Stainless and Aluminum trim, 48" side door, Brand new used once only. \$8995 plus GST. PH. 403-863-6865 or 403-630-3781 Calgary, AB

90KW T600, Cat/10spd., 12' NRC conversion, fully equiped,clean,340k/mi.02 Jensen 42' gn stacker,16' stinger lift, lots of extra's, very clean low mileage, under 20k, pics @ theironalley.com, or further info call 306 387 6190, \$35,000 each or \$65,000 for both, no tax, CALL @ 306 387 6190 A2

1995 24' Wells Fargo enclosed trailer, winch, cabinets, power tongue, good condition. \$6900. PH. Greg 250-317-1204 greg.kilmartin@yahoo.ca Kelowna, O1

36' Chapparral gooseneck,28' on floor, new tires, Line-X floor and front, new wiring and lights, needs paint, great pulling trailer! \$7000 Call Tavis 403-741-4261 J1



Chevy C6, 5 ton Toterhome, 427 Tall deck, 76,000 miles since total rebuild. Has 5 speed trans with 2 speed rear axle. Alcoa rims, Low profile 245/75R 22.5 tires, 220" wheel base. Custom fibreglass toterhome, has 12 volt-120 volt propane fridge, propane 4 burner stove/oven, toilet, sink. Table turns into double bed, lots of storage. Truck is registered as a motor home and has 5th wheel ball as well as std tow hitch. Drives great, must sell \$19,500. For more info and pictures, call Phil in Kamloops 250-573-1871 D1

ATTENTION SHOP OWNERS

GET YOUR SHOP SOME EXPOSURE AND BECOME A DISTRIBUTOR FOR QUICKTIMES

CALL 403.886.7663



PERFORMANCE DIRECTORY

Inform our readers about your Business Here for less than a penny per issue!

Action Sports Photography by Moe
 Moe Putney
 627 Hunterplain Hill N.W.
 Calgary, Alberta, T2K-4L9
 (403) 274-4900 putneym@shaw.ca

AMS (780)454-4411
 12007 - 145 Street, Edmonton, AB T5L 2H4
 Performance, Racing and Marine Engines, Parts & Components
 Balancing * Complete Engine Machining * Porting & Flowbench Testing
 Research & Development * Engine Dynamometer
 amsengines@excite.com

DeL ENGINE SERVICES LARRY OR LES
 CUSTOM MACHINING & AUTOMOTIVE COMPONENTS
 7924 Coronet Road Edmonton AB T6E 4W8
 (780) 465-3586

Accurate Brake & Muffler 1991 Inc.
 W104-20247 Langley ByPass Jim Ward
 Langley B.C V3A-6K9 604-534-0499

ARL RACING ENGINES
 *Head & Intake Porting, Custom Work
 *Comp. Valve Grinds-All Makes
 *Block Work*Parts*Hemi Specialists
 Al Lee 403.304.3860 Wade Lee 403.391.9134
 airacing@hotmail.com

QUICKTIMES MAGAZINE

AFFORDABLE RV Phone (403)207-6877 Fax (403)207-5535
 SALES, RENTALS, AND SERVICES LTD
 2550 Centre Avenue N.E.
 Calgary, AB T2A 2L2

AMAZING Mechanical Home of the SUPER Rear-End
 The affordable solution for putting the power to the pavement for Camaro/Firebirds 1967-2002
 Complete Custom Muscle Car/Super Car Design & Construction
 Ian Thomson (780)436-1127
 www.amazingmechanical.com

BUMPER TO BUMPER™ AUTO PARTS PROFESSIONALS
 PO Box 7169
 4804 3rd Ave, Edson, Alberta
 (780)723-5566
 Fax (780) 723-2466

QUICKTIMES MAGAZINE

 Get an ad here!!

AXLEBENDERS PERFORMANCE CALGARY, AB
 Performance Parts, Accessories & Service
 #3, 3511 - 64th Ave. SE Calgary
 PH: 403-207-3555
 www.axlebenders.ca

CARLINE
 A1 Central Muffler Ltd 1803 11th St SE
 (403)215-0110 Calgary, Ab.
 T2G-3G4

**DISPLAY YOUR
BUSINESS HERE
FOR QUICK
RESULTS!**



PERFORMANCE DIRECTORY

**GET YOUR NAME OUT THERE!
THIS SPACE IS ONLY
\$300/yr**

E-MORTAL CUSTOMS
Temple of Torque
Bay #3, 2808 Ogden Rd, S.E. Calgary Ab
403-265-6669

**HOSE
HEADQUARTERS®**
8113 Edgar Industrial Drive, Red Deer, AB
Phone (403) 340-3908
PERFORMANCE UNDER PRESSURE

**CANADA
ENGINES LTD.**
"B.C.s Largest Full Service Engine Installer"
(604)580-1050 12345 114 Ave, Surrey, B.C V3V-3N6
1-800-665-3570 www.canadaengines.com

Get an ad here!!

www.joeyspcace.com
ANYTHING YOU COULD WANT IN CUSTOM PAINT
AND AUTOMOTIVE RESTORATIONS
HOT RODS-RACE CARS-MUSCLE CARS-EXOTICS- BIKES
(780)454-6514 TOLL FREE 1-866-249-1156

**CASCADE
VANS INTERIORS**
Award Winning
Upholstery
Vans, Rods, Trucks,
Boats, Commercial
4504 12th St. NE. Bay 2 Calgary AB
(403)250-3861 Fax (403)291-4274

**EXTREME
TRANSMISSION REBUILDERS**
#6 - 1902 8th St. E. Saskatoon SK
AUTOMATICS, STANDARDS, DIFFERENTIALS, COOLERS, HIGH STALLS,
SHIFTKITS, COOLERS, RACING TRANSMISSIONS, OR PULL VEHICLES
Call (306) 955-2343 Fax (306)955-5288

Khaos Customs
Performance Parts & Accessories
Full Restoration Services
...on many makes & models
780-968-5004
khaoskustoms.ca

**COMPETITION
INSURANCE
INCORPORATED**
Bus (780) 451-7940
Fax (780) 444-3202
Cel (780) 441-1635
1-800-454-5592
204-17205-106A Ave Edmonton, AB T5S 1M7
www.competition.ca

HalercConcepts.com
(403)227-4446 or (403)358-0511
CHRIS@HALERCONCEPTS.COM
Performance & Corvette Parts,
Powder Coating, Full Restorations,
Custom Builds, Window Tinting,
Stereos, Remote Starters and 3m Film
4002-49 AVE
INNISFAIL, AB

www.kmscarparts.com
(604)522-5593 800-567-8979
**KMS Custom And
CAR PARTS
Restoration**
110 Woodridge St. Coquitlam, B.C.

**Classic
Performance**
MUSCLE CAR PARTS
#27 1410-40th Ave NE Calgary, AB
Call 403-216-6060
www.classicperformance.us

SHERWOOD PARK, AB
**HIGHPOINT
AUTO APPRAISALS**
CARS-TRUCKS-MOTORCYCLES-CLASSIC-CUSTOM-RACE
780-893-0699 highpointappraisals.com
C.P.P.A.G. & S.V.A.I. ACCREDITED APPRAISER

CUSTOM BALANCING
Hines. "State of the Art" Computerized balancing
Internal Balancing, Shot Peening, Precision
Machining/Blueprinting, Meta-Lax stress relieving.
(403)277-0505

**H-O PERFORMANCE
PARTS & SERVICE**
DARCY WANDLER
AUTOMOTIVE PARTS & ACCESSORIES * TUNE UPS * FUEL SYSTEMS * IGNITION
RECURVES ELECTRICAL * ENGINE REBUILDS AND PERFORMANCE SPECIALIST
403-340-8863 FAX 403 346-8536
#11, 4646 Riverside Drive, Red Deer, Alberta T4N 3Y5

Dyno Plus
Superflow 902 Dyno
Sunnen Engine Balancer
SPA Shock Dyno
Bert Transmission Dealer
Goodyear Race Tire Dealer
www.dynoplus.com 403-540-2134

**INDEPENDENT
TESTING
FACILITY**
Serving
Western Canada
Calgary, Alberta

**HOUSE
OF
KOLOR**
D & E
DISTRIBUTOR'S
1-800-665-5750
www.customkolorcanada.com
FLAKES, KANDYS, PEARLS, ICE PEARLS, GLO
DARK, KAMELEON, NEON, STRIPING ENAMELS

**ADVERTISE
HERE!!**

*Your customers want
Quicktimes at your
location, and you can
benefit from an ad in
our Directory for less
than \$1.00 a day,
Call us today!*

403.886.7663

As an advertiser, we will ship copies free to you for your customers...Call us today!

**WANT A DEAL?
JOIN OUR DIRECTORY,
GET MAGAZINES AND
REPEAT CUSTOMERS!**



PERFORMANCE DIRECTORY

LG Kustoms & Hotrods
Kustom Chassis Work • Metal Fabrication
Traditional Hot Rod & Kustom Parts
Vintage Speed Equipment
Lee Grant
16718F-111 Ave Ph 780-886-1409
Edmonton AB Fax 780-481-1178
T5M 3W2 leegrantkustoms@yahoo.ca

PRECISION PERFORMANCE WADE SJOSTROM
AUTO REPAIR
DIVISION OF 579396 ALTA. LTD.
12156 - 66 Street Phone (780)477-7354 (Call First)
Edmonton AB T5B 1J8 Fax (780)474-7054

Street & Strip Performance
S & S Automotive
11111 - 100 St. Grande Prairie, AB T8V 2N2
Tel: 780-538-2886 Fax: 780-539-5617
Toll Free: 1-866-513-2886

Mechanic-Lee Inclined
Automotive Service Performance Parts
TOTALLY STAINLESS-HILBORN
WISECO-YEAR ONE-BDS
(780)584-2476
www.Mechanic-LeelInclined.ca

Pro Stock 12403-126 Ave.
Edmonton AB
(780)453-6161
MACHINE & PERFORMANCE

The MuscleCar shop
Restoration parts, supplies & services
for your American Muscle Car
#123, 4999 - 43rd St. S.E. Calgary, AB
Phone (403) 569-1957 Fax (403) 569-2263

Mister transmission
all Canadian
5965 200 St, Langley, B.C.
PH-604-530-7321

RMC INDUSTRIES LTD.
* Chemical Stripping
* Poly- Blasting
Tel: (780) 435-0642
6207-76 Avenue, Edmonton, AB T6B 0A1
www.rmc-industries.com

TOP GUN COATINGS
*THERMAL BARRIERS
*DRYFILM LUBRICATIONS
*EXHAUSTSYSTEMS COATINGS
*EPOXIES*HALAR*KYNAR
*NYLONS*RYTON
#101, 4715-13th Street, N.E.
CALGARY, ALBERTA T2E-6M3
Ph (403) 250-5393 Fax (403)250-5392

604-533-3398
NEIGHBOURHOOD AUTO
AUTO GLASS & UPHOLSTERY
#202-5726 Landmark Way Surrey, B.C.

Ron's
ENGINE MACHINE
Complete Automotive Machine Shop Service
DOMESTIC-IMPORT-MARINE-TRACK
604.888.0544
#3 - 9520 192 St, Surrey, BC
Email: enginemachine@telus.net

UNIVERSAL SPINNERS
Custom Air Filter Drop Bases
Dominator bases, catch cans and all 14" filters
UNIVERSAL SPINNERS
1950 Ellesmere Rd. Unit #11, Toronto ON, M1H 2V8
PH: 416-299-4009 www.universalspinners.com

Nelson Racing
Fred (403)242-3856
Race Cars * Special Interest * Projects Vehicles in Progress
Certified Appraisals for Insurance/Financing

Scott's SUPER TRUCKS
1932 thru 1972
RESTORATION & CUSTOM
PICK-UP PARTS
(403)886-5572
fax (403)886-5577
Penhold, AB 800-GMC-CHEV (orders)
www.scottssupertrucks.com

Valley Custom Rods
& Collision
Call 604-850-2243
www.valleycustomrods.ca

The Powder Station
THE SOLUTION TO YOUR
CUSTOM POWDER COATING NEEDS
6145 - 80 Street Edmonton, AB T6E 2W8
Toll Free 1-888-460-4747
Phone (780)461-4747 Fax (780)490-4738
www.powderstation.com

Specialty Automotive REPAIRS LTD.
PO Box 6011 Innisfail AB T4G 1S7
Phone (403)227-2424 Fax (403)227-2414

WRENCHHEAD MECHANICAL & PERFORMANCE INC.
COMPLETE AUTOMOTIVE & H.D. REPAIRS
PERFORMANCE INSTALLATIONS
3627 78 Ave., Edmonton, AB., T6B 3J9
Bus: (780) 461-9139 Fax: (780) 461-9346
wrench1@telus.net

precision ENGINES LTD.
#40 MacDonald Rd, Whitehorse, Yukon
Ph:867-633-5373 Fax:867-633-5516
E-mail pel@northwestel.net

STORMY'S STREET RODS
Box 39
New Norway, AB
T0B-3L0
Back Halfs-Tub Work
Custom Paint-Full Chassis Builds
Body Mods-Suspension Mods
Custom Bead Rolling
Hot Rods with Race Car "DNA"
Phone (780) 855-3778
Cell (780) 878-1613
www.stormyssstreetrods.com

www.wheelmasterclassics.com
email-wheelmaster@shaw.ca
Calgary, AB (403)547-0605
1-866-547-0605
WheelMaster Classics

As an advertiser, we will ship you free copies for your customers...Call us today!

* EXOTICS * IMPORTS * RACE CARS * MUSCLE CARS * HOT RODS * BIKES *



When quality matters!

Since 1978, Joey's Place has focused on offering the finest quality in our restoration and specialty paint work. Whether it's a frame-off restoration, a paint job, or a small dent repair on your favorite car, Joey's Place will accommodate you.

Be sure to check our all new website showing 100's of examples of our work at:

www.joey'splace.com

14230 - 115 Ave, Edmonton, AB

780-454-6514

TOLL FREE 1-866-249-6245

SPECIALTY VEHICLE DAMAGE?



INSURANCE CLAIMS, 3M SHADOW SHIELD



RESTORATIONS & CUSTOM PAINT

* EXOTICS * IMPORTS * RACE CARS * MUSCLE CARS * HOT RODS * BIKES *

What is this?

It's a QR (quick response) code which is a 2 dimensional bar code. QR codes are more commonly referred to as "tags". Tags can be scanned by any smart phone to interpret the coded information. QR reader apps are available free on-line. Tags can contain a web address, an email address, SMS text, v-card information or a Facebook link. Imagine what tags could do for your business, sponsor, or race team. The possibilities are endless.

If you would like to know more about tags or to start using them in your advertising, contact Snappy's Graphics and we'll get you going.



Scan this tag with your smart phone to visit

snappysgraphics.com



www.liftking.ca

MAXIMIZE YOUR GARAGE SPACE

PROFESSIONAL INSTALLATION AVAILABLE • FITS MOST GARAGES! EASY TO INSTALL!

THE HOTTEST PRODUCT FOR THE CAR GUYS

NEW! PRO KING MULTI LIFT



Call for more information

PRO KING SCISSOR 6000



\$2,350

BOHYA GARAGE BY CONCEPTIONS MAKING THEIR LIFTS TO SOUND LIKE LIFTING PRODUCT. NO ONE ELSE COMPARES. NO HIDDEN COSTS • NO UNLATER SHIPPING FEES • FULL LINE OF AUTHORIZED PRODUCTS

PRO KING 8

FREE

- JACK TRAY (\$150 VALUE)
- CASTER KIT (\$345 VALUE)
- 3 DRIP TRAYS (\$75 VALUE)
- HEAVY DRIP TARP (\$150 VALUE)

**4 COLOURS
TO CHOOSE
FROM!**



- Safety latches on all columns
- Single point lock release
- Low profile 37" approach ramps
- Powder coat finish
- 8,000lb capacity
- Simple installation
- Designed & tested to a rigid industry standard

24 PAYMENTS OF \$139
OR
NO PAYMENTS FOR 12 MONTHS

**SPECIAL
\$3,095**

LIFT KING

CANADA'S MOST TRUSTED NAME IN
COMMERCIAL GRADE LIFTS

4625 12TH ST NE
CALGARY, AB

1-866-610-KING • 403-283-1020

7167 VANTAGE WAY,
DELTA, BC